

# Beclin 1 Rabbit mAb (AR1274)

## Key Features

Host Species:	Rabbit
Reactivity:	Human,Mouse,Rat
Applications:	WB,IHC,IF,IP,ELISA
Isotype:	IgG,Kappa
MW:	52kD (Calculated) 60kD (Observed)

## Recommended Dilution Ratios

IHC:	1:200-1000
WB:	1:2000-10000
IF:	1:200-1000
ELISA:	1:5000-20000
IP:	1:50-200

## Storage

-15°C to -25°C/1 year (Do not lower than -25°C)

## Basic Information

Clonality: Monoclonal

## Immunogen Information

Specificity: Endogenous

## Target Information

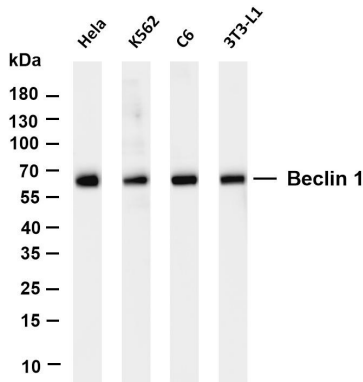
Gene name: BECN1 GT197  
Protein Name: Beclin-1 (Ser15)

Organism	Gene ID	UniProt ID
Human	8678	Q14457
Mouse	56208	O88597
Rat	114558	Q91XJ1

Cellular Localization: Cytoplasm

Tissue specificity: Ubiquitous.

## Validation Data



Various whole cell lysates were separated by 4-20% SDS-PAGE, and the membrane was blotted with anti-Beclin 1 antibody. The HRP-conjugated Goat anti-Rabbit IgG(H + L) antibody was used to detect the antibody.

Lane 1: HeLa

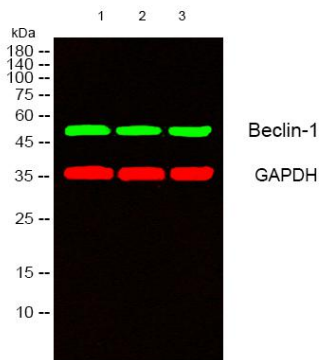
Lane 2: K562

Lane 3: C6

Lane 4: 3T3-L1

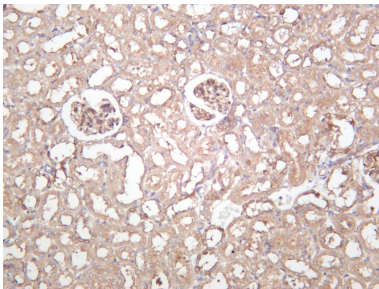
Predicted band size: 52kDa

Observed band size: 60kDa

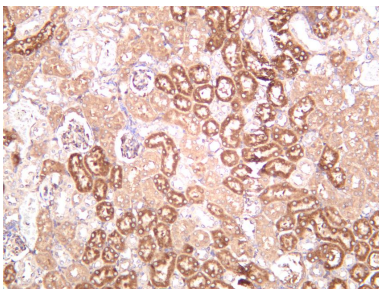


Western blot analysis of lysates from 1) mouse-brain, 2) mouse-lung, 3) HeLa cells, ( Green ) primary antibody was diluted at 1:1000, 4° overnight, secondary antibody was diluted at 1:10000, 37° 1 hour.

( Red ) GAPDH Monoclonal Antibody(2B8) antibody was diluted at 1:5000 as loading control, 4° overnight, secondary antibody was diluted at 1:10000, 37° 1 hour.



Rat kidney was stained with anti-Beclin 1 rabbit antibody



Mouse kidney was stained with anti-Beclin 1 rabbit antibody

For Research Use Only