

## BRCA1 Rabbit mAb (AR1309)

### Key Features

Host Species:	Rabbit
Reactivity:	Human
Applications:	WB,IHC,IF,IP,ELISA
Isotype:	IgG,Kappa
MW:	208kD (Calculated) 270kD (Observed)

### Recommended Dilution Ratios

IHC:	1:10000-50000
WB:	1:100-500
IF:	1:200-1000
ELISA:	1:5000-20000
IP:	1:50-200

### Storage

-15°C to -25°C/1 year (Do not lower than -25°C)

### Basic Information

Clonality: Monoclonal

### Immunogen Information

Specificity: Endogenous

### Target Information

Gene name: BRCA1

Protein Name: Breast cancer type 1 susceptibility protein

Organism	Gene ID	UniProt ID
Human	672	P38398
Mouse		P48754
Rat	497672	O54952

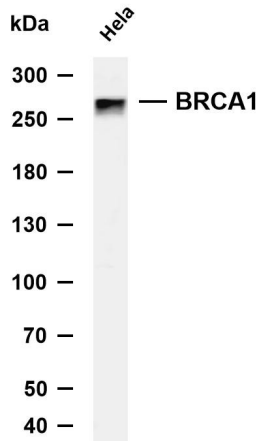
Cellular Localization: Nucleus. Chromosome. Cytoplasm. Localizes at sites of DNA damage at double-strand breaks (DSBs); recruitment to DNA damage sites is mediated by ABRAXAS1 and the BRCA1 A complex (PubMed:26778126). Translocated to the cytoplasm during UV-

induced apoptosis (PubMed:20160719); [Isoform 3]: Cytoplasm.; [Isoform 5]: Cytoplasm.

Tissue specificity

Isoform 1 and isoform 3 are widely expressed. Isoform 3 is reduced or absent in several breast and ovarian cancer cell lines

## Validation Data

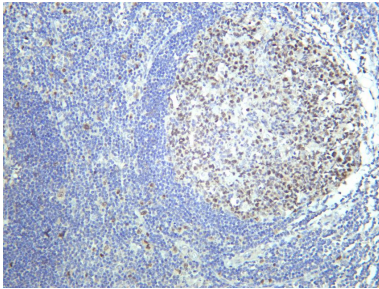


Various whole cell lysates were separated by 4-8% SDS-PAGE, and the membrane was blotted with anti-BRCA1 antibody. The HRP-conjugated Goat anti-Rabbit IgG (H + L) antibody was used to detect the antibody.

Lane 1: HeLa

Predicted band size: 208kDa

Observed band size: 270kDa



Human tonsil was stained with anti-BRCA1 rabbit antibody

For Research Use Only