

## Cystatin C Mouse mAb (AM10025)

### Key Features

Host Species:	Mouse
Reactivity:	Human
Applications:	IF, WB, IHC, ELISA
MW:	14kD (Observed)

### Recommended Dilution Ratios

WB:	1:1000-2000
IHC:	1:100-200
IF:	1:50-200

### Storage

-15°C to -25°C/1 year (Do not lower than -25°C)

### Basic Information

Clonality	Monoclonal
-----------	------------

### Immunogen Information

Specificity	Cystatin C protein detects endogenous levels of CST3
-------------	--

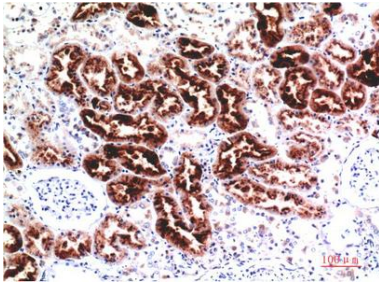
### Target Information

Gene name	CST3
Protein Name	CST3

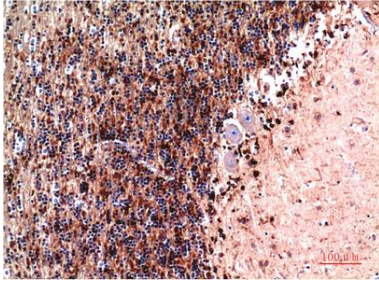
Organism	Gene ID	UniProt ID
Human	1471	P01034
Mouse		P21460

Cellular Localization	Secreted  Expressed in submandibular and sublingual saliva but not in parotid saliva (at protein level).
Tissue specificity	Expressed in various body fluids, such as the cerebrospinal fluid and plasma. Expressed in highest levels in the epididymis, vas deferens, brain, thymus, and ovary and the lowest in the submandibular gland.

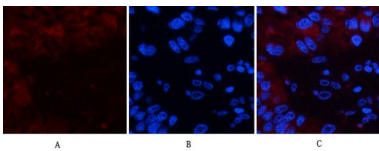
## Validation Data



Immunohistochemical analysis of paraffin-embedded Human Kidney Tissue using Cystatin C Mouse mAb diluted at 1:200



Immunohistochemical analysis of paraffin-embedded Human Brain Tissue using Cystatin C Mouse mAb diluted at 1:200.



Immunofluorescence analysis of human-liver-cancer tissue.  
1, Cystatin C Mouse Monoclonal Antibody (red) was diluted at 1:200 (4°C, overnight).  
2, Cy3 labeled Secondary antibody was diluted at 1:300 (room temperature, 50 min).  
3, Picture B: DAPI (blue) 10 min. Picture A: Target. Picture B: DAPI. Picture C: merge of A+B

For Research Use Only