

Rhodopsin Rabbit pAb (AR20053)

Key Features

Host Species:	Rabbit
Reactivity:	Human,Mouse,Rat
Applications:	WB,IHC,IF,ELISA
Isotype:	IgG
MW:	42kDa (Observed)

Recommended Dilution Ratios

WB:	1:500-2000
IHC:	1:100-300
IF:	1:50-200
ELISA:	1:5000

Storage

-15°C to -25°C/1 year (Do not lower than -25°C)

Basic Information

Clonality	Polyclonal
-----------	------------

Immunogen Information

Specificity	Rhodopsin Polyclonal Antibody detects endogenous levels of Rhodopsin protein.
-------------	---

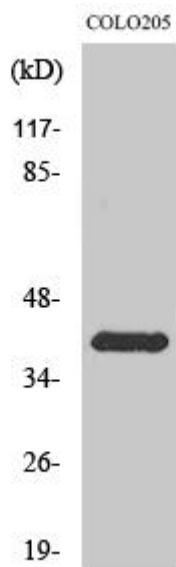
Target Information

Gene name	RHO
Protein Name	Rhodopsin

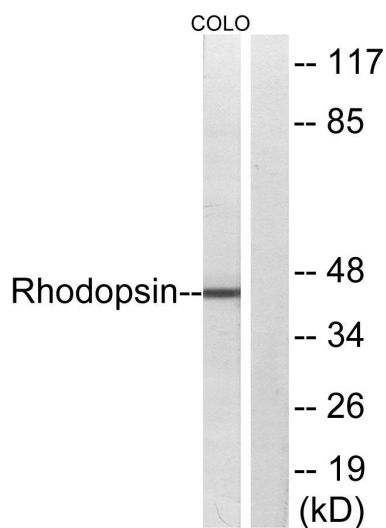
Organism	Gene ID	UniProt ID
Human	6010	P08100
Mouse	212541	P15409
Rat	24717	P51489

Cellular Localization	Membrane ; Multi-pass membrane protein . Cell projection, cilium, photoreceptor outer segment . Synthesized in the inner segment (IS) of rod photoreceptor cells before vectorial transport to disk membranes in the rod outer segment (OS) photosensory cilia. .
Tissue specificity	Rod shaped photoreceptor cells which mediate vision in dim light.

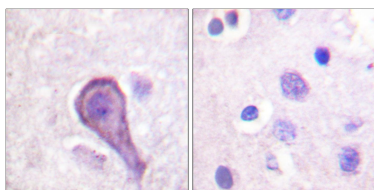
Validation Data



Western Blot analysis of various cells using Rhodopsin Polyclonal Antibody



Western blot analysis of lysates from COLO cells, using Rhodopsin Antibody. The lane on the right is blocked with the synthesized peptide.



Immunohistochemistry analysis of paraffin-embedded human brain tissue, using Rhodopsin Antibody. The picture on the right is blocked with the synthesized peptide

For Research Use Only