

Raf-1 Rabbit mAb (AR1538)

Key Features

Host Species:	Rabbit
Reactivity:	Human,Mouse,Rat
Applications:	WB,IF,ELISA
Isotype:	IgG,Kappa
	73kD (Calculated)
MW:	73kD (Observed)

Recommended Dilution Ratios

WB:	1:2000-10000
IF:	1:200-1000
ELISA:	1:5000-20000

Storage

-15°C to -25°C/1 year (Do not lower than -25°C)

Basic Information

Clonality	Monoclonal
-----------	------------

Immunogen Information

Specificity	Endogenous
-------------	------------

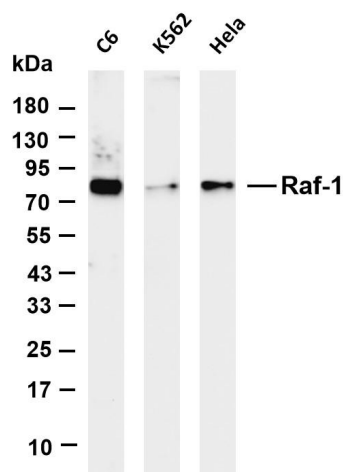
Target Information

Gene name	RAF1
Protein Name	RAF proto-oncogene serine/threonine-protein kinase

Organism	Gene ID	UniProt ID
Human	5894	P04049
Mouse	110157	Q99N57
Rat	24703	P11345

Cellular Localization	Membrane, Cytoplasm, Nucleus
Tissue specificity	In skeletal muscle, isoform 1 is more abundant than isoform 2.

Validation Data



Various whole cell lysates were separated by 4-20% SDS-PAGE, and the membrane was blotted with anti-Raf-1 antibody. The HRP-conjugated Goat anti-Rabbit IgG(H + L) antibody was used to detect the antibody.

Lane 1: C6

Lane 2: K562

Lane 3: HeLa

Predicted band size: 73kDa

Observed band size: 73kDa

For Research Use Only