

## ATM (Phospho Ser1981) Rabbit mAb (AR1864)

### Key Features

Host Species:	Rabbit
Reactivity:	Human,Mouse,Rat
Applications:	WB,IHC,IF,IP,ELISA,CHIP,Cut&Tag
Isotype:	IgG,Kappa
MW:	351kDa (Calculated) 351kDa (Observed)

### Recommended Dilution Ratios

IHC:	1:200-1000
WB:	1:10000-50000
IF:	1:200-1000
ELISA:	1:5000-20000
IP:	1:50-200
CHIP:	1:50-100
Cut&Tag:	1:50-100

### Storage

-15°C to -25°C/1 year (Do not lower than -25°C)

### Basic Information

Clonality	Monoclonal
-----------	------------

### Immunogen Information

Specificity	ATM (Phospho Ser1981) Monoclonal Antibody detects endogenous levels of Phospho Atm around the phosphorylation site of S1981(human), S1896(mouse), S1927(rat) protein. The name of modified sites may be influenced by many factors, such as species (the modified site was not originally found in human samples) and the change of protein sequence (the previous protein sequence is incomplete, and the protein sequence may be prolonged with the development of protein sequencing technology). When naming, we will use the "numbers" in historical reference to keep the sites consistent with the reports. The antibody binds to the following modification sequence (lowercase letters are modification sites):EGsQS
-------------	---

## Target Information

Gene name ATM

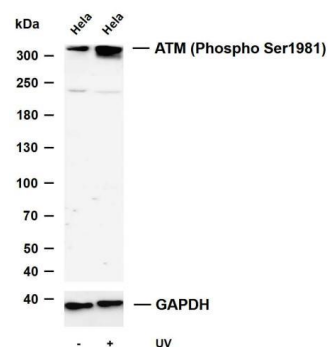
Protein Name Serine-protein kinase ATM

	Organism	Gene ID	UniProt ID
	Human	472	Q13315
	Mouse	11920	Q62388

Cellular Localization Nucleus. Cytoplasmic vesicle. Cytoplasm, cytoskeleton, microtubule organizing center, centrosome. Primarily nuclear. Found also in endocytic vesicles in association with beta-adaptin.

Tissue specificity Found in pancreas, kidney, skeletal muscle, liver, lung, placenta, brain, heart, spleen, thymus, testis, ovary, small intestine, colon and leukocytes.

## Validation Data



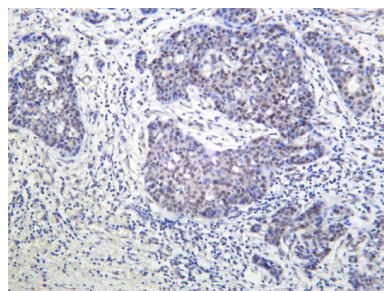
Various whole cell lysates were separated by 4-8% SDS-PAGE, and the membrane was blotted with anti-ATM (Phospho Ser1981) antibody. The HRP-conjugated Goat anti-Rabbit IgG (H + L) antibody was used to detect the antibody.

Lane 1: HeLa

Lane 2: HeLa treated with UV for 1hour, then recovered for 1 hour

Predicted band size: 351kDa

Observed band size: 351kDa



Human breast carcinoma was stained with anti-ATM (Phospho Ser1981) Rabbit antibody.

For Research Use Only