

# Histone H3 (Acetyl Lys18) Rabbit mAb (AR1859)

## Key Features

Host Species:	Rabbit
Reactivity:	Human,Mouse,Rat
Applications:	WB,IHC,IF,IP,ELISA,CHIP,Cut&Tag
Isotype:	IgG,Kappa
MW:	15kDa (Calculated) 17kDa (Observed)

## Recommended Dilution Ratios

IHC:	1:200-1000
WB:	1:2000-10000
IF:	1:200-1000
ELISA:	1:5000-20000
IP:	1:50-200
CHIP:	1:50-100
Cut&Tag:	1:50-100

## Storage

-15°C to -25°C/1 year (Do not lower than -25°C)

## Basic Information

Clonality	Monoclonal
-----------	------------

## Immunogen Information

Specificity	Acetyl-Histone H3 (K18) Monoclonal Antibody detects endogenous levels of Histone H3 protein only when acetylated at K18.The name of modified sites may be influenced by many factors, such as species (the modified site was not originally found in human samples) and the change of protein sequence (the previous protein sequence is incomplete, and the protein sequence may be prolonged with the development of protein sequencing technology). When naming, we will use the "numbers" in historical reference to keep the sites consistent with the reports. The antibody binds to the following modification sequence (lowercase letters are modification sites): PRkQL
-------------	--

## Target Information

Gene name

HIST1H3A/ HIST1H3B/ HIST1H3C/ HIST1H3D/ HIST1H3E/  
HIST1H3F/HIST1H3G/ HIST1H3H/ HIST1H3I/ HIST1H3J/ HIST2H3A/  
HIST2H3C/ HIST2H3D/ H3F3A/ H3F3B

Protein Name

Histone H3.1/ Histone H3.2/ Histone H3.3

Organism	Gene ID	UniProt ID
Human	8350; 8351; 8352;	P68431; Q71DI3; P84243
	8353; 8354; 8355;	
	8356; 8357; 8358;	
	8968; 126961;	
Mouse	333932;	P68433
	653604; 3020; 3021	
	319152; 15077;	
	15078	
Rat	291159; 100361558	Q6LED0; P84245

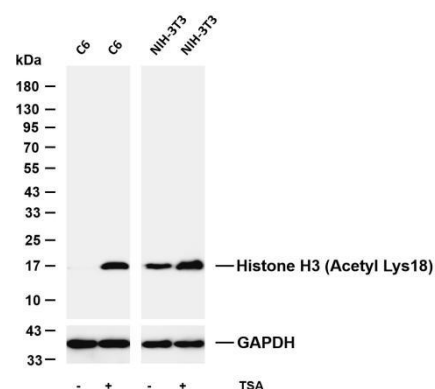
Cellular Localization

Nucleus. Chromosome

Tissue specificity

Blood, Epithelium, Kidney, Lung, Ovary, Spleen, Uterus

## Validation Data



Various whole cell lysates were separated by 4-20% SDS-PAGE, and the membrane was blotted with anti-Histone H3 (Acetyl Lys18) antibody. The HRP-conjugated Goat anti-Rabbit IgG (H + L) antibody was used to detect the antibody.

Lane 1: C6

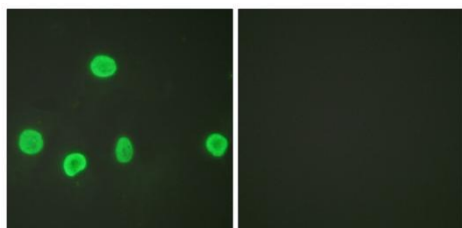
Lane 2: C6 was treated with TSA (500ng/mL) for 4 hours

Lane 3: NIH-3T3

Lane 4: NIH-3T3 was treated with TSA (400nM) for 18 hours

Predicted band size: 15kDa

Observed band size: 17kDa



Immunofluorescence analysis of HeLa cells, using Histone H3 (Acetyl-Lys18) Antibody. The picture on the right is blocked with the synthesized peptide.

For Research Use Only