

Insulin Rabbit mAb (AR1341)

Key Features

Host Species:	Rabbit
Reactivity:	Human, Mouse, Rat
Applications:	WB, IHC, IF, ELISA
Isotype:	IgG, Kappa
MW:	12kD (Calculated) 12kD (Observed)

Recommended Dilution Ratios

IHC	1:200-1000
WB:	1:1000-5000
IF:	1:200-1000
ELISA:	1:5000-20000

Storage -15°C to -25°C/1 year (Do not lower than -25°C)

Basic Information

Clonality Monoclonal

Immunogen Information

Specificity Endogenous

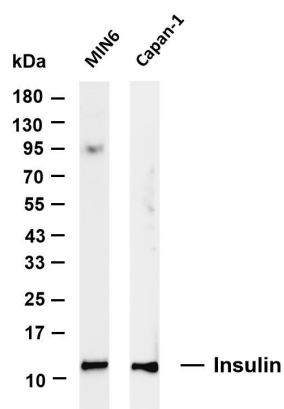
Target Information

Gene name INS
Protein Name Insulin

Organism	Gene ID	UniProt ID
Human	3630	P01308

Cellular Localization Cytoplasmic
Tissue specificity Blood, Liver, Muscle, Pancreas,

Validation Data



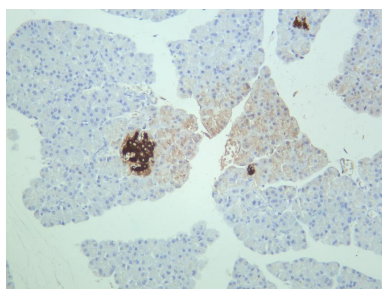
Various whole cell lysates were separated by 4-20% SDS-PAGE, and the membrane was blotted with anti-Insulin antibody. The HRP-conjugated Goat anti-Rabbit IgG(H + L) antibody was used to detect the antibody.

Lane 1: MIN6

Lane 2: Capan-1

Predicted band size: 12kDa

Observed band size: 12kDa



Rat pancreas was stained with anti-Insulin rabbit antibody

For Research Use Only