

Src Rabbit mAb (AR1319)

Key Features

Host Species:	Rabbit
Reactivity:	Human,Mouse,Rat
Applications:	WB,IHC,IF,ELISA
Isotype:	IgG,Kappa
MW:	60kD (Calculated) 60kD (Observed)

Recommended Dilution Ratios

IHC:	1:1000-4000
WB:	1:2000-10000
IF:	1:200-1000
ELISA:	1:5000-20000

Storage

-15°C to -25°C/1 year (Do not lower than -25°C)

Basic Information

Clonality	Monoclonal
-----------	------------

Immunogen Information

Specificity	Endogenous
-------------	------------

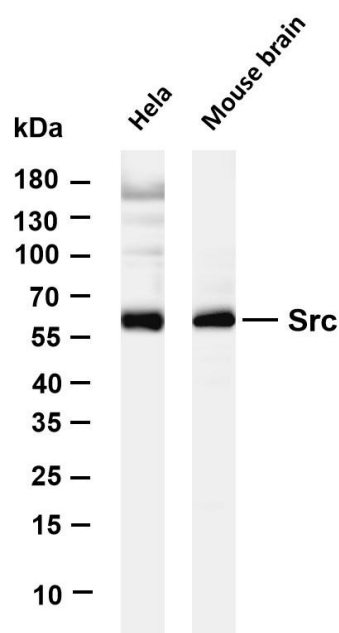
Target Information

Gene name	SRC SRC1
Protein Name	Src

Organism	Gene ID	UniProt ID
Human	6714	P12931
Mouse	20779	P05480
Rat		Q9WUD9

Cellular Localization	Cytoplasm, Nucleus
Tissue specificity	Expressed ubiquitously. Platelets, neurons and osteoclasts express 5-fold to 200-fold higher levels than most other tissues.; [Isoform 1]: Expressed in spleen and liver; [Isoform 2]: Expressed in brain; [Isoform 3]: Expressed in brain.

Validation Data



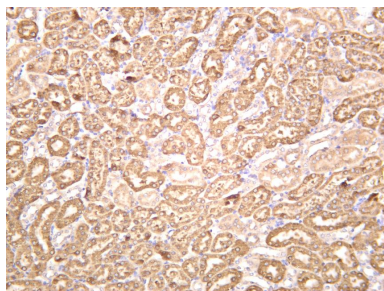
Various whole cell lysates were separated by 4-20% SDS-PAGE, and the membrane was blotted with anti-Src antibody. The HRP-conjugated Goat anti Rabbit IgG(H + L) antibody was used to detect the antibody.

Lane 1: HeLa

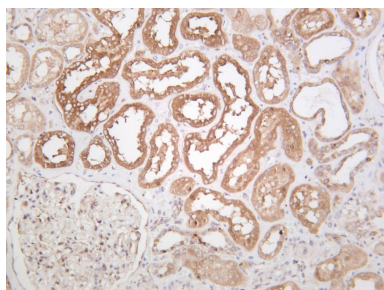
Lane 2: Mouse brain

Predicted band size: 60kDa

Observed band size: 60kDa



Mouse kidney was stained with anti-Src rabbit antibody



Human kidney was stained with anti-Src rabbit antibody

For Research Use Only