

## EpCAM Rabbit mAb (AbFluor 647) (AR1849)

### Key Features

Host Species:	Rabbit
Reactivity:	Human, Mouse, Rat
Applications:	IF
Isotype:	IgG, Kappa
MW:	35kDa (Calculated) 40kDa (Observed)
Conjugate:	AbFluor 647

### Recommended Dilution Ratios

IF:	1:50-200
-----	----------

### Storage

-15°C to -25°C/1 year (Do not lower than -25°C)

### Basic Information

Clonality	Monoclonal
-----------	------------

### Immunogen Information

Specificity	Endogenous
-------------	------------

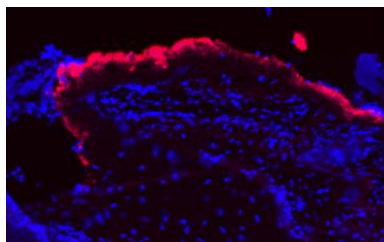
### Target Information

Gene name	EPCAM GA733-2 M1S2 M4S1 MIC18 TACSTD1 TROP1
Protein Name	Epithelial cell adhesion molecule

Organism	Gene ID	UniProt ID
Human	4072	P16422
Mouse	17075	Q99JW5

Cellular Localization	Membrane
Tissue specificity	Highly and selectively expressed by undifferentiated rather than differentiated embryonic stem cells (ESC). Levels rapidly diminish as soon as ESC's differentiate (at protein levels). Expressed in almost all epithelial cell membranes but not on mesodermal or neural cell membranes. Found on the surface of adenocarcinoma.

## Validation Data



Immunofluorescence analysis of human tonsil. Primary antibody was diluted at 1:100(4°C overnight).

For Research Use Only