

Collagen Type I A1 Mouse mAb (AM10002)

Key Features

Host Species:	Mouse
Reactivity:	Human,Mouse,Rat
Applications:	IHC,WB,IF,ELISA
Isotype:	IgG2b,Kappa
	139kD (Calculated)
MW:	220kD (Observed)

Recommended Dilution Ratios

IHC:	1:200-1000
WB:	1:500-2000
IF:	1:100-500
ELISA	1:1000-5000

Storage

-15°C to -25°C/1 year (Do not lower than -25°C)

Basic Information

Clonality	Monoclonal
-----------	------------

Immunogen Information

Specificity	The antibody can specifically recognize human Collagen Type I alpha 1 protein, can not recognize Collagen Type I alpha 2, collagen types II, III, IV and V do not respond to the antibody.
-------------	--

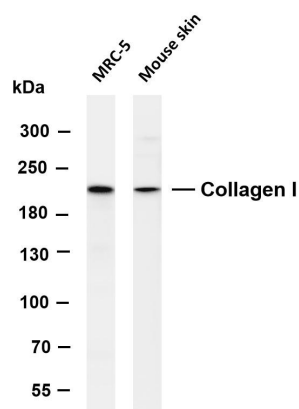
Target Information

Gene name	COL1A1
Protein Name	Collagen I α 1 (Cleaved-Ala1218)

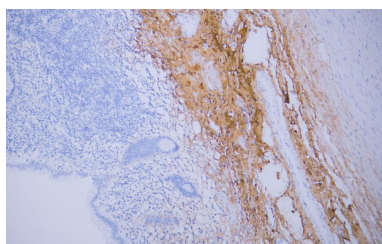
Organism	Gene ID	UniProt ID
Human	1277	P02452
Mouse	12842	P11087
Rat	29393	P02454

Cellular Localization	Secreted, extracellular space, extracellular matrix.
Tissue specificity	Forms the fibrils of tendon, ligaments and bones. In bones the fibrils are mineralized with calcium hydroxyapatite.

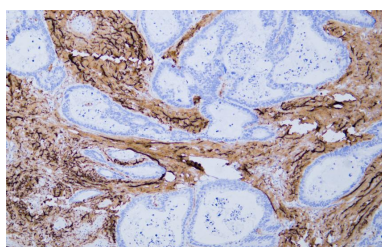
Validation Data



Various whole cell lysates were separated by 4-8% SDS-PAGE, and the membrane was blotted with anti-Collagen I antibody. The HRP-conjugated Goat anti-Rabbit IgG(H + L) antibody was used to detect the antibody. Lane 1: MRC-5 Lane 2: Mouse skin Predicted band size: 139kDa Observed band size: 220kDa



Human appendix tissue was stained with Anti-Collagen Type I Antibody.



Human colon carcinoma tissue was stained with Anti-Collagen Type I Antibody.

For Research Use Only