

## Tyrosinase Mouse mAb (AM10023)

### Key Features

Host Species:	Mouse
Reactivity:	Human,Mouse
Applications:	IHC,WB,IF,ELISA
Isotype:	IgA,Kappa
MW:	60kD (Calculated) 50-80kD (Observed)

### Recommended Dilution Ratios

WB:	1:500-2000
IHC:	1:200-1000
IF:	1:100-500
ELISA:	1:1000-5000

### Storage

-15°C to -25°C/1 year (Do not lower than -25°C)

### Basic Information

Clonality	Monoclonal
-----------	------------

### Immunogen Information

Specificity	This antibody detects endogenous levels of Tyrosinase protein.
-------------	--

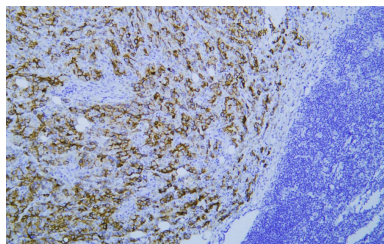
### Target Information

Gene name	TYR
Protein Name	Tyrosinase

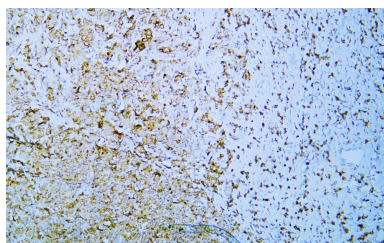
Organism	Gene ID	UniProt ID
Human	7299	P14679
Mouse	22173	P11344

Cellular Localization	Cytoplasmic
Tissue specificity	Skin

## Validation Data



Human malignant melanoma tissue was stained with Anti-Tyrosinase Antibody



Human malignant melanoma tissue was stained with Anti-Tyrosinase Antibody

For Research Use Only