

Collagen I A1 Rabbit mAb (AR1435)

Key Features

Host Species:	Rabbit
Reactivity:	Human,Mouse,Rat
Applications:	WB,IHC,IF,IP,ELISA
Isotype:	IgG,Kappa
MW:	139kD (Calculated) 220kD (Observed)

Recommended Dilution Ratios

IHC:	1:200-1000
WB:	1:2000-10000
IF:	1:200-1000
ELISA:	1:5000-20000

Storage

-15°C to -25°C/1 year (Do not lower than -25°C)

Basic Information

Clonality	Monoclonal
-----------	------------

Immunogen Information

Specificity	Endogenous
-------------	------------

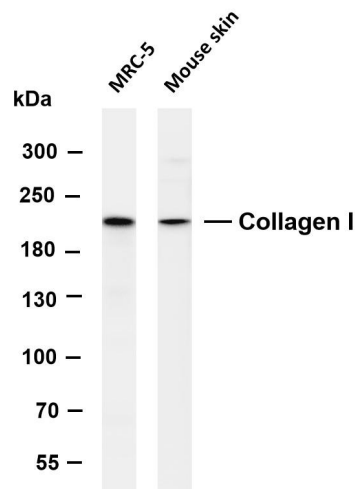
Target Information

Gene name	COL1A1
Protein Name	Collagen I α 1 (Cleaved-Ala1218)

Organism	Gene ID	UniProt ID
Human	1277	P02452
Mouse	12842	P11087
Rat	29393	P02454

Cellular Localization	Secreted, extracellular space, extracellular matrix .
Tissue specificity	Forms the fibrils of tendon, ligaments and bones. In bones the fibrils are mineralized with calcium hydroxyapatite.

Validation Data



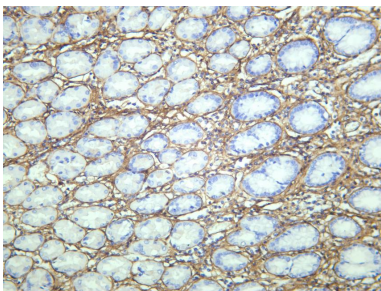
Various whole cell lysates were separated by 4-8% SDS-PAGE, and the membrane was blotted with anti-Collagen I antibody. The HRP-conjugated Goat anti-Rabbit IgG(H + L) antibody was used to detect the antibody.

Lane 1: MRC-5

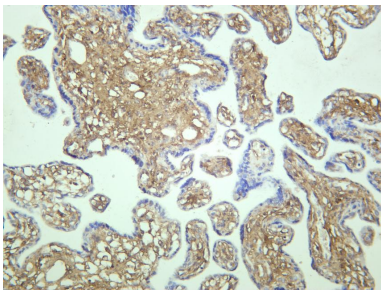
Lane 2: Mouse skin

Predicted band size: 139kDa

Observed band size: 220kDa



Human stomach was stained with anti-Collagen I rabbit antibody



Human placenta was stained with anti-Collagen I rabbit antibody

For Research Use Only