

TGF β 1 Rabbit mAb (AR1220)

Key Features

Host Species:	Rabbit
Reactivity:	Human, Mouse, Rat
Applications:	WB, IHC, IF, ELISA
Isotype:	IgG, Kappa
MW:	44kD (Calculated) 44kD, 13kD (Observed)

Recommended Dilution Ratios

IHC:	1:2000-5000
WB:	1:1000-5000
IF:	1:200-1000
ELISA:	1:5000-20000

Storage

-15°C to -25°C/1 year (Do not lower than -25°C)

Basic Information

Clonality: Monoclonal

Immunogen Information

Specificity: Endogenous

Target Information

Gene name: TGFB1 TGFB

Protein Name: Transforming growth factor beta-1 (TGF-beta-1) [Cleaved into: Latency-associated peptide (LAP)]

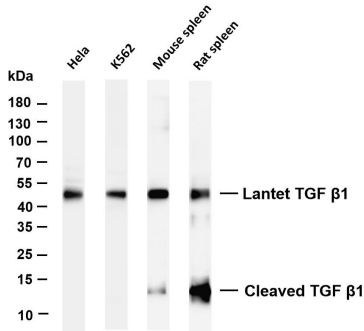
Organism	Gene ID	UniProt ID
Human	7040	P01137
Mouse	21803	P04202
Rat	59086	P17246

Cellular Localization: Secreted

Tissue specificity: Highly expressed in bone (PubMed:11746498, PubMed:17827158). Abundantly expressed in articular cartilage and chondrocytes and is increased in osteoarthritis (OA) (PubMed:11746498, PubMed:11746498).

17827158). Colocalizes with ASPN in chondrocytes within OA lesions of articular cartilage (PubMed:17827158).

Validation Data



Various whole cell lysates were separated by 4-20% SDS-PAGE, and the membrane was blotted with anti-TGF β 1 antibody. The HRP-conjugated Goat anti-Rabbit IgG(H + L) antibody was used to detect the antibody.

Lane 1: HeLa

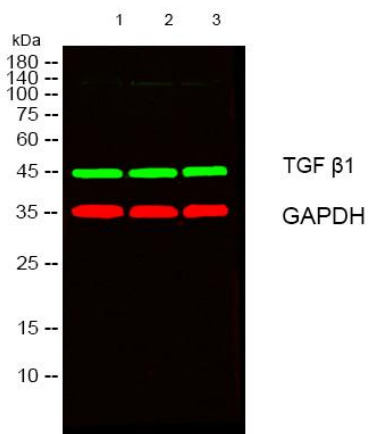
Lane 2: K562

Lane 3: Mouse spleen

Lane 4: Rat spleen

Predicted band size: 44kDa

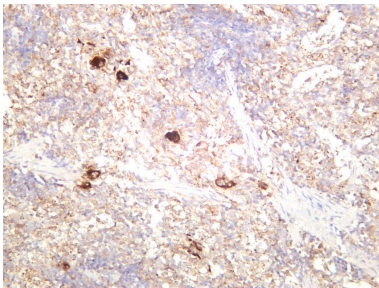
Observed band size: 44,13kDa



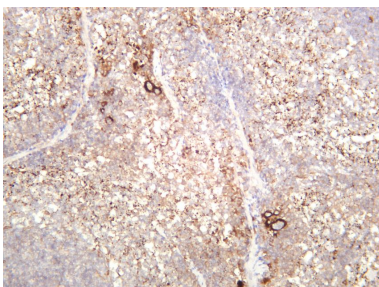
Western blot analysis of lysates from 1) Mouse Brain ,2) HT29,3) HepG2 cells.

(Green) primary antibody was diluted at 1:1000, 4° overnight, secondary antibody was diluted at 1:10000, 37° 1hour.

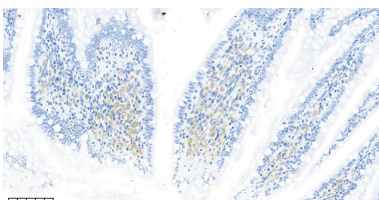
(Red) GAPDH Monoclonal Antibody(2B8) antibody was diluted at 1:5000 as loading control, 4° overnight, secondary antibody was diluted at 1:10000, 37° 1hour.



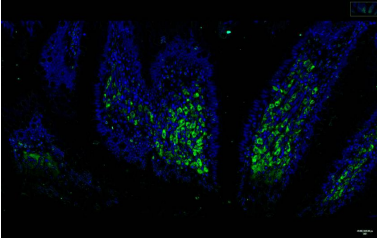
Rat spleen was stained with anti-TGF β 1 rabbit antibody



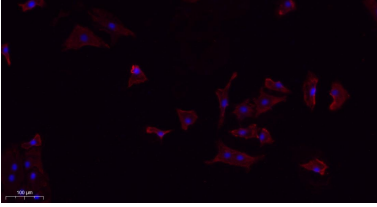
Mouse spleen was stained with anti-TGF β 1 rabbit antibody



Rat jejunum was stained with anti-TGF β 1 Rabbit antibody



Rat jejunum was stained with anti-TGF β 1 Rabbit antibody



Immunofluorescence analysis of A549.

1. primary Antibody(red) was diluted at 1:200(4°C overnight).
2. Goat Anti Rabbit IgG (H&L) - Alexa Fluor 594 Secondary antibody was diluted at 1:1000(room temperature, 50min).
3. DAPI (blue) 10min.

For Research Use Only