

## CD4 Rabbit mAb (AR1218)

### Key Features

Host Species:	Rabbit
Reactivity:	Human
Applications:	WB,IHC,IF,ELISA
Isotype:	IgG,Kappa
MW:	51kD (Calculated) 55kD (Observed)

### Recommended Dilution Ratios

IHC:	1:1000-5000
WB:	1:1000-5000
IF:	1:200-1000
ELISA:	1:5000-20000

### Storage

-15°C to -25°C/1 year (Do not lower than -25°C)

### Basic Information

Clonality	Monoclonal
-----------	------------

### Immunogen Information

Specificity	Endogenous
-------------	------------

### Target Information

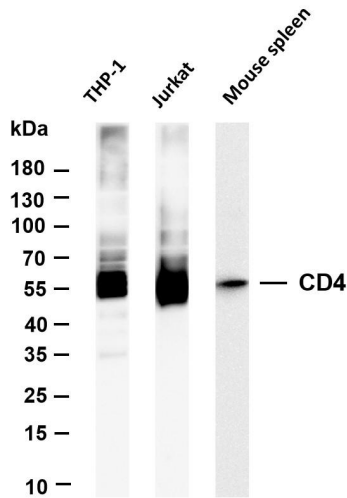
Gene name	CD4
Protein Name	T-cell surface glycoprotein CD4 (T-cell surface antigen T4/Leu-3) (CD antigen CD4)

Organism	Gene ID	UniProt ID
Human	920	P01730
Mouse	12504	P06332
Rat	24932	P05540

Cellular Localization	Membrane
Tissue specificity	Highly expressed in T-helper cells. The presence of CD4 is a hallmark of T-helper cells which are specialized in the activation and growth of cytotoxic T-cells, regulation of B cells, or activation

of phagocytes. CD4 is also present in other immune cells such as macrophages, dendritic cells or NK cells.

## Validation Data



Various whole cell lysates were separated by 4-20% SDS-PAGE, and the membrane was blotted with anti-CD4 antibody. The HRP-conjugated Goat anti-Rabbit IgG(H + L) antibody was used to detect the antibody.

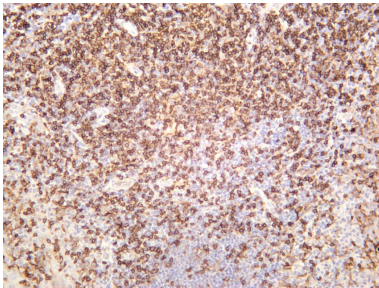
Lane 1: THP-1

Lane 2: Jurkat

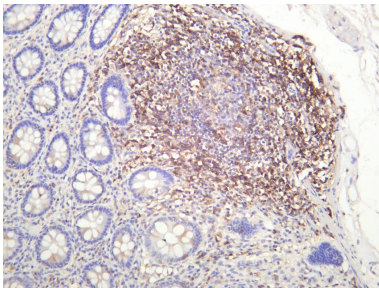
Lane 3: Mouse spleen

Predicted band size: 51kDa

Observed band size: 55kDa



Human tonsil was stained with anti-CD4 rabbit antibody



Human colon was stained with anti-CD4 rabbit antibody

For Research Use Only