

CD14 Rabbit mAb (AR1212)

Key Features

Host Species:	Rabbit
Reactivity:	Human, Mouse, Rat
Applications:	WB, IHC, IF, ELISA
Isotype:	IgG, Kappa
MW:	40kD (Calculated) 50kD (Observed)

Recommended Dilution Ratios

IHC:	1:2000-1:5000
WB:	1:1000-5000
IF:	1:200-1000
ELISA:	1:5000-20000

Storage

-15°C to -25°C/1 year (Do not lower than -25°C)

Basic Information

Clonality	Monoclonal
-----------	------------

Immunogen Information

Specificity	Endogenous
-------------	------------

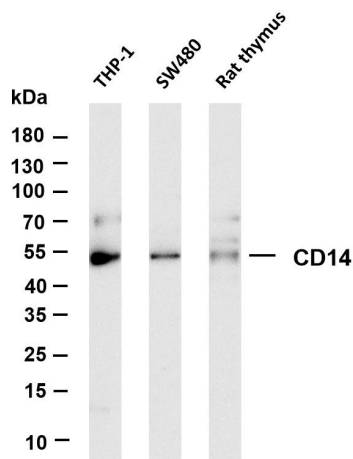
Target Information

Gene name	CD14
Protein Name	CD14

Organism	Gene ID	UniProt ID
Human	929	P08571
Mouse	12475	P10810
Rat	60350	Q63691

Cellular Localization	Membrane
Tissue specificity	Detected on macrophages (at protein level) (PubMed:1698311). Expressed strongly on the surface of monocytes and weakly on the surface of granulocytes; also expressed by most tissue macrophages.

Validation Data



Various whole cell lysates were separated by 4-20% SDS-PAGE, and the membrane was blotted with anti-CD14 antibody. The HRP-conjugated Goat anti-Rabbit IgG(H + L) antibody was used to detect the antibody.

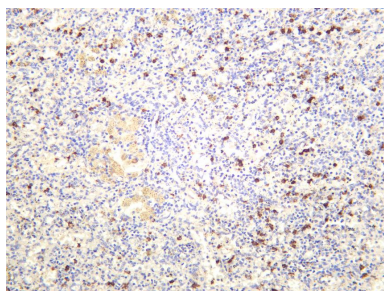
Lane 1: THP-1

Lane 2: SW480

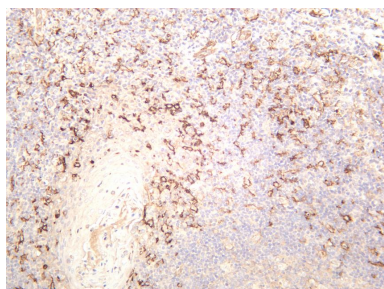
Lane 3: Rat thymus

Predicted band size: 40kDa

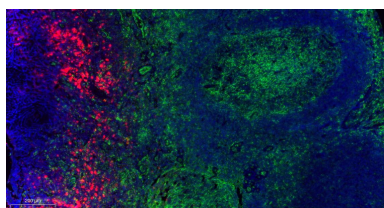
Observed band size: 50kDa



Human spleen was stained with anti-CD14 rabbit antibody



Human tonsil was stained with anti-CD14 rabbit antibody



Fluorescence multiplex immunohistochemical analysis of human tonsil tissue (formalin-fixed paraffin-embedded section). The immunostaining was performed by Sextuple-Fluorescence kit. CD38 rabbit mAb(RED) and CD14 rabbit mAb(GREEN) was tested with different TSA Fluorescence reagent. Microscopy and pseudocoloring of individual dyes was performed using a Slideviewer Imaging System (Excilone).

For Research Use Only