

# Cytokeratin 7 Rabbit mAb (AR1194)

## Key Features

Host Species:	Rabbit
Reactivity:	Human,Mouse,Rat
Applications:	WB,IHC,IF,ELISA
Isotype:	IgG,Kappa
MW:	51kD (Calculated) 55kD (Observed)

## Recommended Dilution Ratios

IHC:	1:1000-2000
WB:	1:1000-5000
IF:	1:200-1000
ELISA:	1:5000-20000

## Storage

-15°C to -25°C/1 year (Do not lower than -25°C)

## Basic Information

Clonality	Monoclonal
-----------	------------

## Immunogen Information

Specificity	Endogenous
-------------	------------

## Target Information

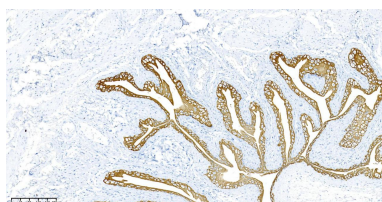
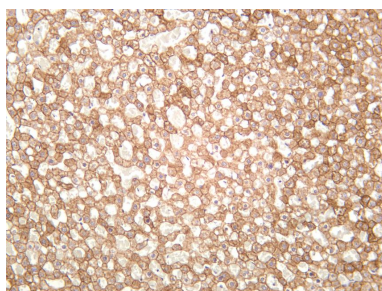
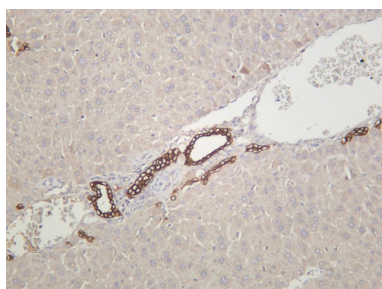
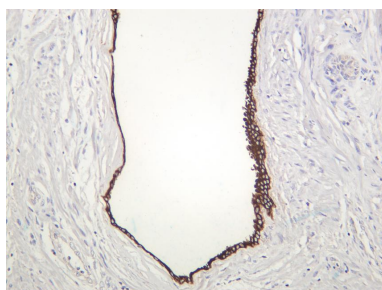
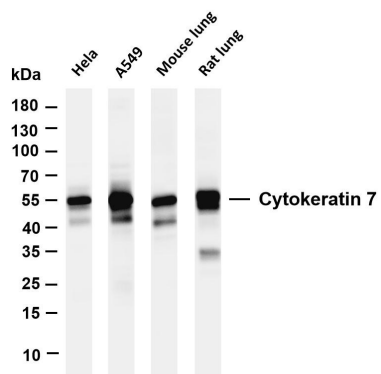
Gene name	KRT7 SCL
Protein Name	CK7; CK-7; Cytokeratin7; D15Wsu77e; K2C7; K2C7_HUMAN; K7; Keratin 7; Keratin 7, type II; Keratin type II cytoskeletal 7; Keratin, 55K type II cytoskeletal; Keratin, simple epithelial; Keratin, simple epithelial type I, K7; Keratin, type II cytoskeletal 7; Keratin-7; Krt2-7; KRT7; MGC11625; MGC129731; MGC3625; Sarcolectin; SCL; Type II mesothelial keratin K7; Type-II keratin Kb7

Organism	Gene ID	UniProt ID
Human	3855	P08729
Mouse	110310	Q9DCV7
Rat	300242	Q6IG12

## Cellular Localization

## Tissue specificity

## Validation Data



## Cytoplasm

## Pancreas

Various whole cell lysates were separated by 4-20% SDS-PAGE, and the membrane was blotted with anti-Cytokeratin 7 antibody. The HRP-conjugated Goat anti-Rabbit IgG(H + L) antibody was used to detect the antibody.

Lane 1: HeLa

Lane 2: A549

Lane 3: Mouse lung

Lane 4: Rat lung

Predicted band size: 51kDa

Observed band size: 55kDa

Human prostate was stained with anti-Cytokeratin 7 rabbit antibody

Mouse liver was stained with anti-Cytokeratin 7 rabbit antibody

Rat liver was stained with anti-Cytokeratin 7 rabbit antibody

Rat bladder was stained with anti-Cytokeratin 7 Rabbit antibody