

## Survivin Rabbit mAb (AR1143)

### Key Features

Host Species:	Rabbit
Reactivity:	Human
Applications:	WB,IF,ELISA
Isotype:	IgG,Kappa
MW:	16kD (Calculated) 16kD (Observed)

### Recommended Dilution Ratios

WB:	1:1000-5000
IF:	1:200-1000
ELISA:	1:5000-20000

### Storage

-15°C to -25°C/1 year (Do not lower than -25°C)

### Basic Information

Clonality	Monoclonal
-----------	------------

### Immunogen Information

Specificity	Endogenous
-------------	------------

### Target Information

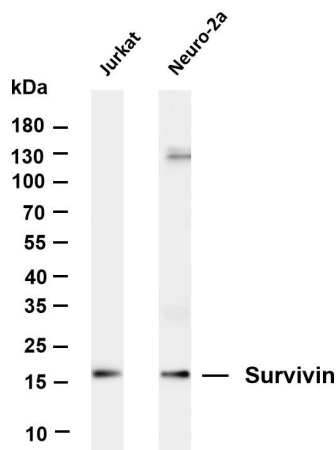
Gene name	BIRC5
Protein Name	BIRC5

Organism	Gene ID	UniProt ID
Human	332	O15392
Mouse	11799	O70201
Rat	64041	Q9JHY7

Cellular Localization	Nucleus
Tissue specificity	Expressed only in fetal kidney and liver, and to lesser extent, lung and brain (PubMed:10626797). Abundantly expressed in adenocarcinoma (lung, pancreas, colon, breast, and prostate) and in high-grade lymphomas (PubMed:14741722, PubMed:16329164). Also expressed in various renal cell carcinoma

cell lines (PubMed:10626797). Expressed in cochlea including the organ of Corti, the lateral wall, the interdental cells of the Limbus as well as in Schwann cells and cells of the cochlear nerve and the spiral ganglions (at protein level). Not expressed in cells of the inner and outer sulcus or the Reissner's membrane (at protein level) (PubMed:21364656, PubMed:20627126).

## Validation Data



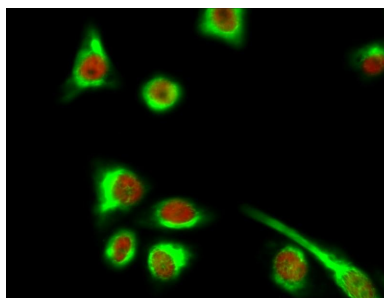
Various whole cell lysates were separated by 4-20% SDS-PAGE, and the membrane was blotted with anti-Survivin antibody. The HRP-conjugated Goat anti-Rabbit IgG(H + L) antibody was used to detect the antibody.

Lane 1: Jurkat

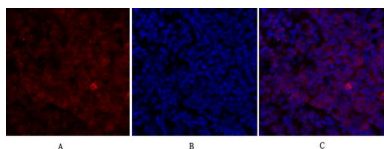
Lane 2: Neuro-2a

Predicted band size: 16kDa

Observed band size: 16kDa



Immunofluorescence analysis of Hela cell. 1, Survivin Antibody (red) was diluted at 1:200 (4° overnight). Active Caspase -3 Monoclonal Antibody (green) was diluted at 1:200 (4° overnight). 2, Goat Anti Rabbit Alexa Fluor 594 was diluted at 1:1000 (room temperature, 50min). Goat Anti Mouse Alexa Fluor 488 was diluted at 1:1000 (room temperature, 50min)



Immunofluorescence analysis of mouse-lung tissue. 1, Survivin Antibody (red) was diluted at 1:200 (4°C, overnight). 2, Cy3 labeled Secondary antibody was diluted at 1:300 (room temperature, 50min). 3, Picture B: DAPI (blue) 10min. Picture A: Target. Picture B: DAPI. Picture C: merge of A+B

For Research Use Only