

SR-1A Rabbit pAb (AR20091)

Key Features

Host Species:	Rabbit
Reactivity:	Human,Mouse,Rat
Applications:	WB,IHC,IF,ELISA
Isotype:	IgG
MW:	46kD (Observed)

Recommended Dilution Ratios

WB:	1:500-2000
IHC:	1:100-300
IF:	1: 200-1000
ELISA:	1:20000

Storage

-15°C to -25°C/1 year (Do not lower than -25°C)

Basic Information

Clonality	Polyclonal
-----------	------------

Immunogen Information

Specificity	SR-1A Polyclonal Antibody detects endogenous levels of SR-1A protein.
-------------	---

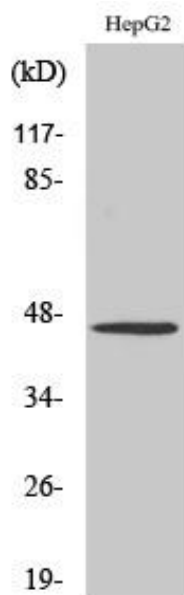
Target Information

Gene name	HTR1A
Protein Name	5-hydroxytryptamine receptor 1A

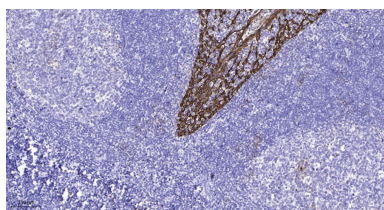
Organism	Gene ID	UniProt ID
Human	3350	P08908
Mouse	15550	Q64264
Rat	24473	P19327

Cellular Localization	Cell membrane ; Multi-pass membrane protein . Cell projection, dendrite .
Tissue specificity	Detected in lymph nodes, thymus and spleen. Detected in activated T-cells, but not in resting T-cells.

Validation Data



Western Blot analysis of various cells using SR-1A Polyclonal Antibody diluted at 1:500



Immunohistochemical analysis of paraffin-embedded human tonsil. 1, Antibody was diluted at 1:200(4° overnight). 2, Tris-EDTA,pH9.0 was used for antigen retrieval. 3,Secondary antibody was diluted at 1:200(room temperature, 45min)

For Research Use Only