

GDF-8 Mouse mAb (AM10019)

Key Features

Host Species:	Mouse
Reactivity:	Human
Applications:	WB,ELISA
Isotype:	IgG1,Kappa
MW:	43kDa (Calculated)

Recommended Dilution Ratios

WB:	1:500-2000
ELISA:	1:10000

Storage

-15°C to -25°C/1 year (Do not lower than -25°C)

Basic Information

Clonality	Monoclonal
-----------	------------

Immunogen Information

Specificity	GDF-8 Monoclonal Antibody detects endogenous levels of GDF-8 protein.
-------------	---

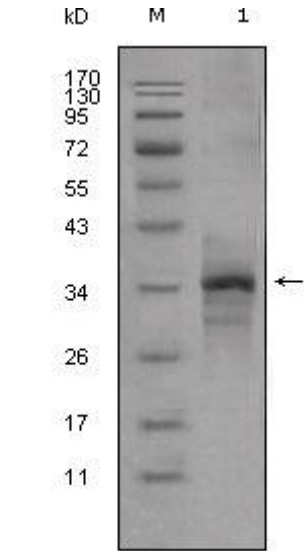
Target Information

Gene name	MSTN
Protein Name	Growth/differentiation factor 8

Organism	Gene ID	UniProt ID
Human	2660	O14793
Mouse		O08689

Cellular Localization	Secreted .
Tissue specificity	Colon,Muscle,Pericardium,Skeletal muscle

Validation Data



Western Blot analysis using GDF-8 Monoclonal Antibody against truncated GDF-8-His recombinant protein (1).

For Research Use Only