

Inhibin β -B Rabbit pAb (AR20050)

Key Features

Host Species:	Rabbit
Reactivity:	Human, Mouse, Rat
Applications:	WB, IHC, IF, ELISA
Isotype:	IgG
MW:	45kD (Observed)

Recommended Dilution Ratios

WB:	1:500-2000
IHC:	1:100-300
ELISA:	1: 20000
IF:	1:50-200
Storage	-15°C to -25°C/1 year (Do not lower than -25°C)

Basic Information

Clonality	Polyclonal
-----------	------------

Immunogen Information

Specificity	Inhibin β -B Polyclonal Antibody detects endogenous levels of Inhibin β -B protein.
-------------	-------------------------------------------------------------------------------------------------

Target Information

Gene name	INHBB
Protein Name	Inhibin beta B chain

Organism	Gene ID	UniProt ID
Human	3625	P09529
Mouse	16324	Q04999
Rat	25196	P17491

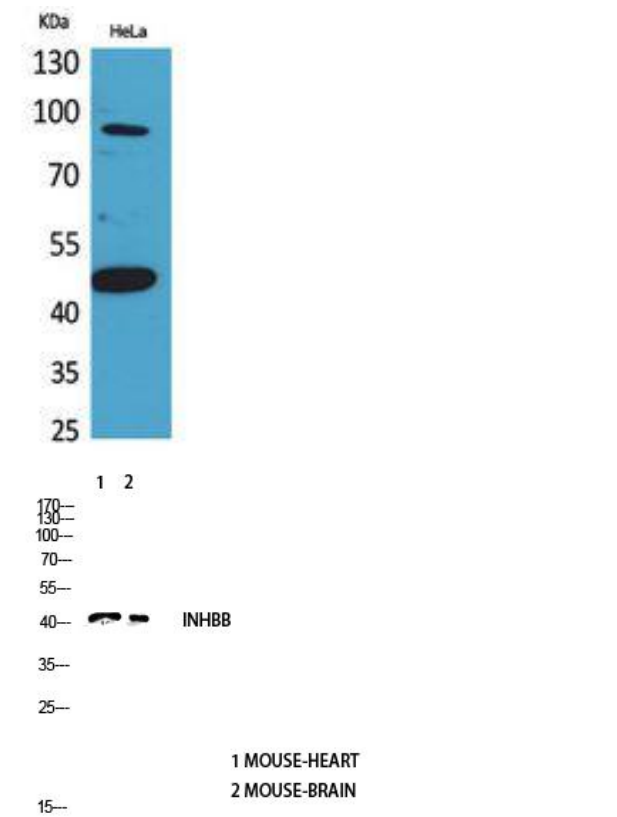
Cellular Localization

Secreted.

Tissue specificity

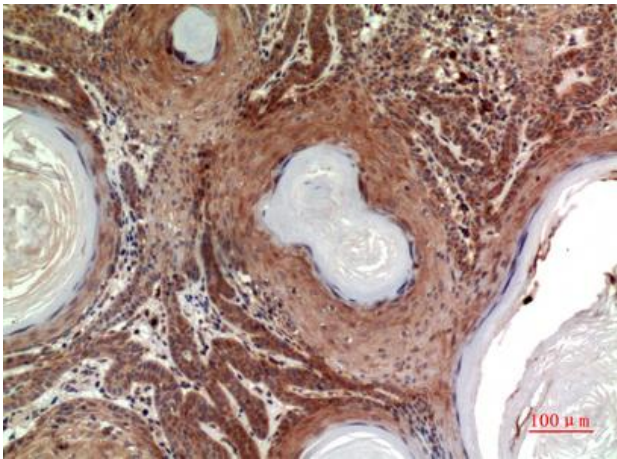
Brain

Validation Data



Western Blot analysis of HeLa cells using Inhibin β -B Polyclonal Antibody. Antibody was diluted at 1:2000. Secondary antibody was diluted at 1:20000.

Western blot analysis of wb4147442094 lysis using INHBB Antibody antibody. Antibody was diluted at 1:2000. Secondary antibody was diluted at 1:20000.



Immunohistochemical analysis of paraffin-embedded human-skin, antibody was diluted at 1:100.

For Research Use Only