

Glucagon Rabbit mAb (AR1967)

Key Features

Host Species:	Rabbit
Reactivity:	Human,Mouse,Rat
Applications:	WB,IHC,IF,ELISA
Isotype:	IgG,Kappa
MW:	21kDa (Calculated) 21kDa (Observed)

Recommended Dilution Ratios

IHC:	1:200-1000
WB:	1:2000-10000
IF:	1:200-1000
ELISA:	1:5000-20000

Storage

-15°C to -25°C/1 year (Do not lower than -25°C)

Basic Information

Clonality	Monoclonal
-----------	------------

Immunogen Information

Specificity	Endogenous
-------------	------------

Target Information

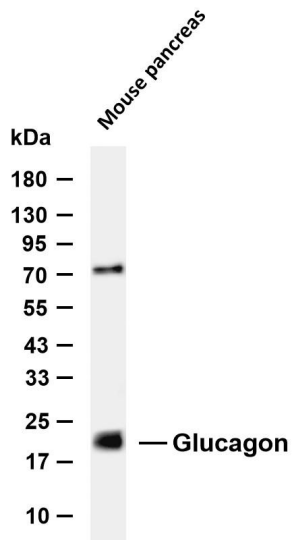
Gene name	GCG
Protein Name	Glucagon

Organism	Gene ID	UniProt ID
Human	2641	P01275
Mouse	14526	P55095
Rat		P06883

Cellular Localization	Secreted; [Glucagon-like peptide 1]: Secreted [Glucagon]: Secreted in the A cells of the islets of Langerhans;
Tissue specificity	[Glucagon-like peptide 1]: Secreted in the A cells of the islets of Langerhans (PubMed:22037645). Secreted from enteroendocrine L cells throughout the gastrointestinal tract (PubMed:22037645). Also

secreted in selected neurons in the brain. ; [Glucagon-like peptide 2]: Secreted from enteroendocrine cells throughout the gastrointestinal tract. Also secreted in selected neurons in the brain.; [Glicentin]: Secreted from enteroendocrine cells throughout the gastrointestinal tract.; [Oxyntomodulin]: Secreted from enteroendocrine cells throughout the gastrointestinal tract

Validation Data

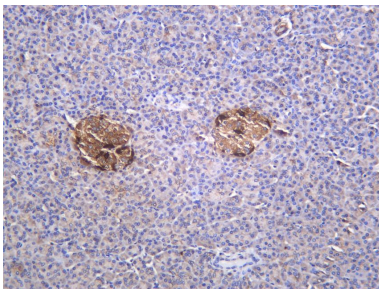


Various whole cell lysates were separated by 4-20% SDS-PAGE, and the membrane was blotted with anti-Glucagon antibody. The HRP conjugated Goat anti-Rabbit IgG (H + L) antibody was used to detect the antibody.

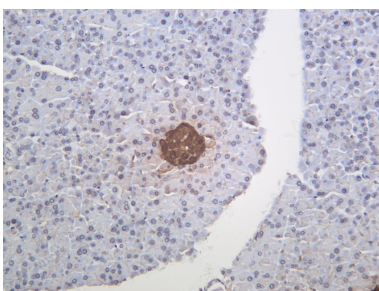
Lane 1: Mouse pancreas

Predicted band size: 21kDa

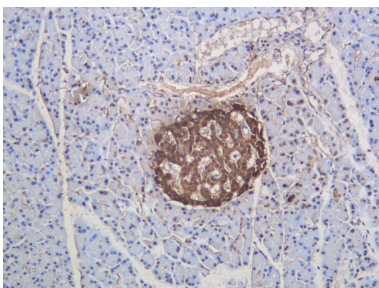
Observed band size: 21kDa



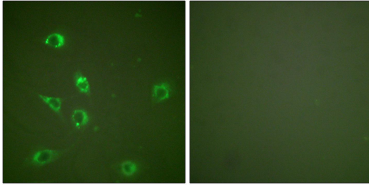
Human pancreas was stained with anti-Glucagon Rabbit antibody.



Mouse pancreas was stained with anti-Glucagon Rabbit antibody.



Rat pancreas was stained with anti-Glucagon Rabbit antibody.



Immunofluorescence analysis of NIH/3T3 cells, using Glucagon Antibody. The picture on the right is blocked with the synthesized peptide.

For Research Use Only