

GRB2 Rabbit mAb (AR1964)

Key Features

Host Species:	Rabbit
Reactivity:	Human,Mouse,Rat
Applications:	WB,IHC,IF,IP,ELISA
Isotype:	IgG,Kappa
MW:	25kDa (Calculated) 25kDa (Observed)

Recommended Dilution Ratios

IHC:	1:200-1000
WB:	1:2000-10000
IF:	1:200-1000
ELISA:	1:5000-20000
IP:	1:50-200

Storage

-15°C to -25°C/1 year (Do not lower than -25°C)

Basic Information

Clonality	Monoclonal
-----------	------------

Immunogen Information

Specificity	Endogenous
-------------	------------

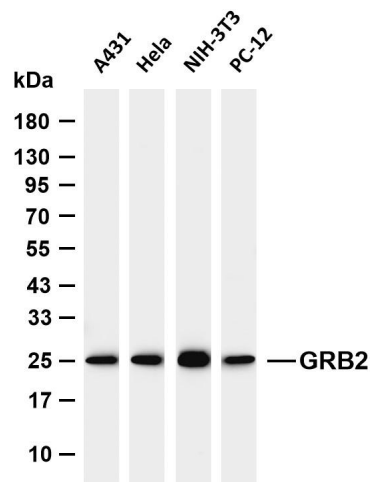
Target Information

Gene name	GRB2
Protein Name	Growth factor receptor-bound protein 2

Organism	Gene ID	UniProt ID
Human	2885	P62993
Mouse	14784	Q60631
Rat	81504	P62994

Cellular Localization	Nucleus. Cytoplasm. Endosome. Golgi apparatus.
Tissue specificity	Brain, Cajal-Retzius cell, Epidermis, Epithelium, Fetal brain cortex

Validation Data



Various whole cell lysates were separated by 4-20% SDS-PAGE, and the membrane was blotted with anti-GRB2 antibody. The HRP conjugated Goat anti-Rabbit IgG (H + L) antibody was used to detect the antibody.

Lane 1: A431

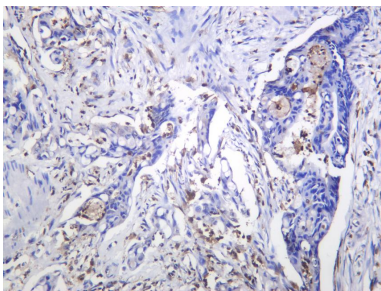
Lane 2: HeLa

Lane 3: NIH-3T3

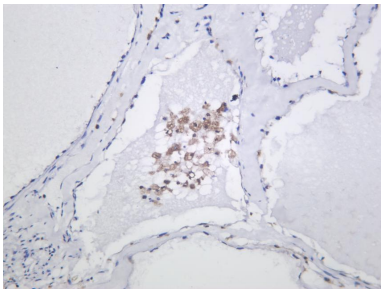
Lane 4: PC-12

Predicted band size: 25kDa

Observed band size: 25kDa



Human colon carcinoma was stained with anti-GRB2 Rabbit antibody.



Human ovarian carcinoma was stained with anti-GRB2 Rabbit antibody.

For Research Use Only