

FOXL2 Rabbit mAb (AR1963)

Key Features

Host Species:	Rabbit
Reactivity:	Human, Mouse, Rat
Applications:	WB, IHC, IF, IP, ELISA
Isotype:	IgG, Kappa
MW:	39kDa (Calculated) 49kDa (Observed)

Recommended Dilution Ratios

IHC:	1:200-1000
WB:	1:2000-10000
IF:	1:200-1000
ELISA:	1:5000-20000
IP:	1:50-200

Storage

-15°C to -25°C/1 year (Do not lower than -25°C)

Basic Information

Clonality	Monoclonal
-----------	------------

Immunogen Information

Specificity	Endogenous
-------------	------------

Target Information

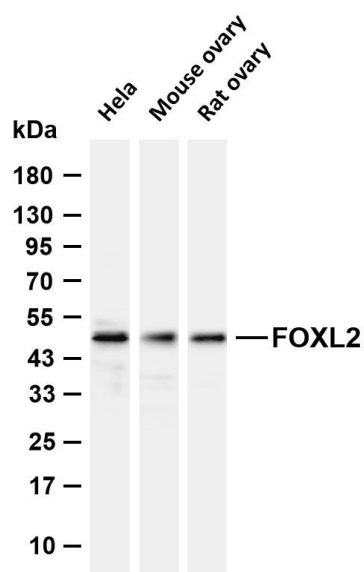
Gene name	FOXL2
Protein Name	Forkhead box protein L2

Organism	Gene ID	UniProt ID
Human	668	P58012
Mouse	26927	O88470

Cellular Localization	Nucleus
-----------------------	---------

Tissue specificity	In addition to its expression in the developing eyelid, it is transcribed very early in somatic cells of the developing gonad (before sex determination) and its expression persists in the follicular cells of the adult ovary.
--------------------	--

Validation Data



Various whole cell lysates were separated by 4-20% SDS-PAGE, and the membrane was blotted with anti-FOXL2 antibody. The HRP conjugated Goat anti-Rabbit IgG (H + L) antibody was used to detect the antibody.

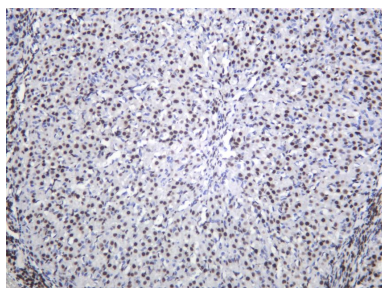
Lane 1: HeLa

Lane 2: Mouse ovary

Lane 3: Rat ovary

Predicted band size: 39kDa

Observed band size: 49kDa



Rat ovarian was stained with anti-FOXL2 Rabbit antibody.

For Research Use Only