

AP-2 γ Rabbit mAb (AR1962)

Key Features

Host Species:	Rabbit
Reactivity:	Human, Mouse, Rat
Applications:	WB, IHC, IF, ELISA
Isotype:	IgG, Kappa
MW:	49kDa (Calculated) 49kDa (Observed)

Recommended Dilution Ratios

IHC:	1:200-1000
WB:	1:2000-10000
IF:	1:200-1000
ELISA:	1:5000-20000

Storage

-15°C to -25°C/1 year (Do not lower than -25°C)

Basic Information

Clonality	Monoclonal
-----------	------------

Immunogen Information

Specificity	Endogenous
-------------	------------

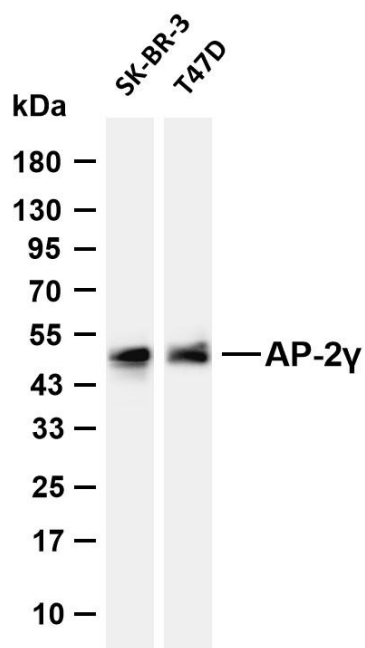
Target Information

Gene name	TFAP2C
Protein Name	Transcription factor AP-2 gamma

Organism	Gene ID	UniProt ID
Human	7022	Q92754
Mouse	21420	Q61312

Cellular Localization	Nucleus
Tissue specificity	Liver, Mammary tumor, Ovary, Skin

Validation Data



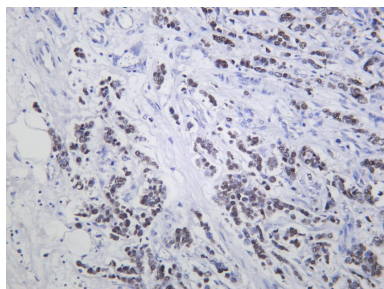
Various whole cell lysates were separated by 4-20% SDS-PAGE, and the membrane was blotted with anti-AP-2 γ antibody. The HRP conjugated Goat anti-Rabbit IgG (H + L) antibody was used to detect the antibody.

Lane 1: SK-BR-3

Lane 2: T47D

Predicted band size: 49kDa

Observed band size: 49kDa



Human breast was stained with anti-AP-2 γ Rabbit antibody.

For Research Use Only