

# Histone H3 (Tri Methyl Lys36) Rabbit mAb (AR1948)

## Key Features

Host Species:	Rabbit
Reactivity:	Human, Mouse, Rat
Applications:	WB, IHC, IF, IP, ELISA, CHIP, Cut&Tag
Isotype:	IgG, Kappa
MW:	15kDa (Calculated) 17kDa (Observed)

## Recommended Dilution Ratios

IHC:	1:200-1000
WB:	1:2000-10000
IF:	1:200-1000
ELISA:	1:5000-20000
IP:	1:50-200
CHIP	1:50-1:100
Cut&Tag	1:50-1:100

## Storage

-15°C to -25°C/1 year (Do not lower than -25°C)

## Basic Information

Clonality	Monoclonal
-----------	------------

## Immunogen Information

Specificity	Endogenous
-------------	------------

## Target Information

Gene name	HIST1H3A/HIST1H3B/HIST1H3C/HIST1H3D/HIST1H3E/HIST1H3F/HIST1H3G/HIST1H3H/HIST1H3I/HIST1H3J/HIST2H3A/HIST2H3C/HIST2H3D/H3F3A/H3F3B
Protein Name	Histone H3.1/Histone H3.2/Histone H3.3

Organism	Gene ID	UniProt ID
Human	8350; 8351; 8352; 8353; 8354; 8355; 8356; 8357; 8358; 8968	P68431; Q71DI3; P84243

Mouse	319152; 15077; 15078	P68433
Rat	291159; 100361558	Q6LED0; P84245

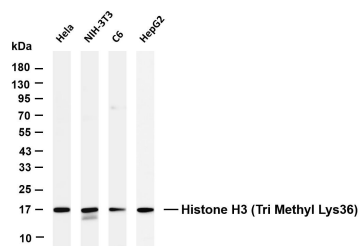
Cellular Localization

Nucleus. Chromosome.

Tissue specificity

Blood, Epithelium, Kidney, Lung, Ovary, Spleen, Uterus.

## Validation Data



Various whole cell lysates were separated by 4-20% SDS-PAGE, and the membrane was blotted with anti-Histone H3 (Tri Methyl Lys36) antibody. The HRP-conjugated Goat anti-Rabbit IgG (H + L) antibody was used to detect the antibody.

Lane 1: HeLa

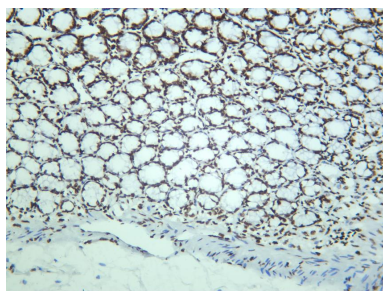
Lane 2: NIH-3T3

Lane 3: C6

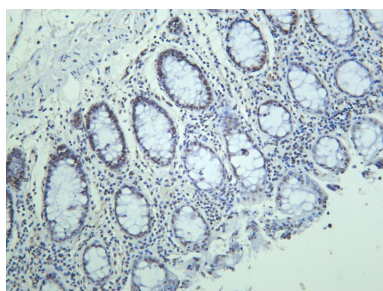
Lane 4: HepG2

Predicted band size: 15kDa

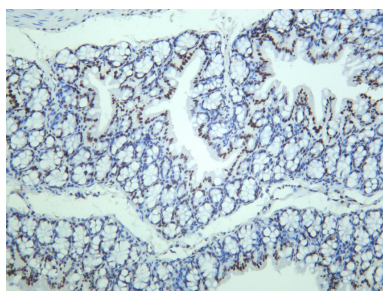
Observed band size: 17kDa



Rat colon was stained with anti-Histone H3 (Tri Methyl Lys36) rabbit antibody.



Human colon was stained with anti-Histone H3 (Tri Methyl Lys36) rabbit antibody.



Mouse colon was stained with anti-Histone H3 (Tri Methyl Lys36) rabbit antibody.

For Research Use Only