

SREBP-1 Rabbit mAb (AR1922)

Key Features

Host Species:	Rabbit
Reactivity:	Human,Mouse,Rat
Applications:	WB,IHC,IF,ELISA
Isotype:	IgG,Kappa
MW:	122kDa (Calculated) 125kDa (Observed)

Recommended Dilution Ratios

IHC:	1:200-1000
WB:	1:2000-10000
IF:	1:200-1000
ELISA:	1:5000-20000

Storage

-15°C to -25°C/1 year (Do not lower than -25°C)

Basic Information

Clonality	Monoclonal
-----------	------------

Immunogen Information

Specificity	Endogenous
-------------	------------

Target Information

Gene name	SREBF1 BHLHD1 SREBP1
Protein Name	SREBP-1

Organism	Gene ID	UniProt ID
Human	6720;	P36956
Mouse	20787;	Q9WTN3
Rat	78968	P56720;

Cellular Localization

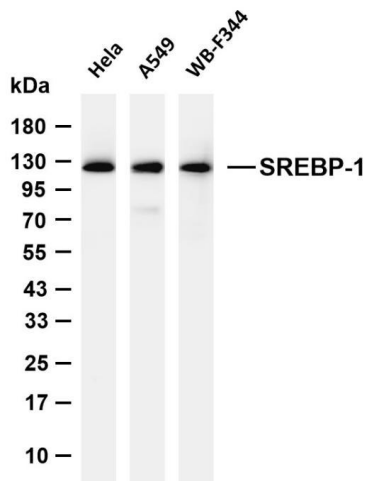
[Sterol regulatory element-binding protein 1]: Endoplasmic reticulum membrane; Multi pass membrane protein. Golgi apparatus membrane; Multi-pass membrane protein. Cytoplasmic vesicle, COPII-coated vesicle membrane; Multi-pass membrane protein. At high sterol concentrations, the SCAP-SREBP is retained

in the endoplasmic reticulum. Low sterol concentrations promote recruitment into COPII-coated vesicles and transport of the SCAP-SREBP to the Golgi, where it is processed; [Processed sterol regulatory element binding protein 1]: Nucleus; [Isoform SREBP-1aDelta]: Nucleus; [Isoform SREBP-1cDelta]: Nucleus

Expressed in a wide variety of tissues, most abundant in liver and adrenal gland (PubMed:8402897). In fetal tissues lung and liver shows highest expression (PubMed:8402897); [Isoform SREBP-1A]: Predominates in hepatoma cell lines (PubMed:8402897). Also expressed in kidney, brain, white fat, and muscle (PubMed:8402897). [Isoform SREBP-1C]: Predominantly expressed in liver and adipose tissues (PubMed:8402897). Also expressed in kidney, brain, white fat, and muscle (PubMed:8402897)

Tissue specificity

Validation Data



Various whole cell lysates were separated by 4-20% SDS-PAGE, and the membrane was blotted with anti-SREBP-1 antibody. The HRP conjugated Goat anti-Rabbit IgG (H + L) antibody was used to detect the antibody.

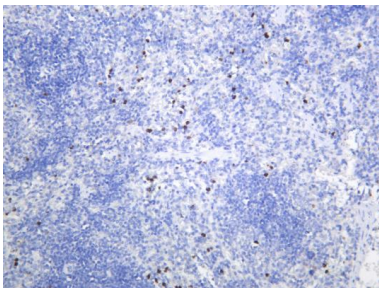
Lane 1: HeLa

Lane 2: A549

Lane 3: WB-F344

Predicted band size: 122kDa

Observed band size: 125kDa



Rat spleen was stained with anti-SREBP-1 Rabbit antibody.