

Wnt3a Rabbit mAb (AR1920)

Key Features

Host Species:	Rabbit
Reactivity:	Human,Mouse,Rat
Applications:	WB,IHC,IF,IP,ELISA
Isotype:	IgG,Kappa
MW:	39kDa (Calculated) 39kDa (Observed)

Recommended Dilution Ratios

IHC:	1:200-1000
WB:	1:2000-10000
IF:	1:200-1000
ELISA:	1:5000-20000
IP:	1:50-200

Storage

-15°C to -25°C/1 year (Do not lower than -25°C)

Basic Information

Clonality	Monoclonal
-----------	------------

Immunogen Information

Specificity	Endogenous
-------------	------------

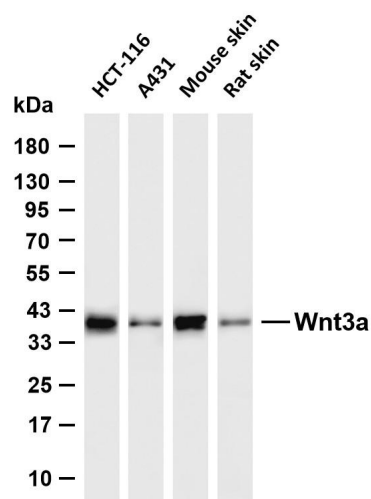
Target Information

Gene name	wnt3a
Protein Name	Protein Wnt-3a

Organism	Gene ID	UniProt ID
Human	89780	P56704
Mouse		P27467
Rat		

Cellular Localization	Secreted, extracellular space, extracellular matrix. Secreted.
Tissue specificity	Moderately expressed in placenta and at low levels in adult lung, spleen, and prostate.

Validation Data



Various whole cell lysates were separated by 4-20% SDS-PAGE, and the membrane was blotted with anti-Wnt3a antibody. The HRP conjugated Goat anti-Rabbit IgG (H + L) antibody was used to detect the antibody.

Lane 1: HCT-116

Lane 2: A431

Lane 3: Mouse skin

Lane 4: Rat skin

Predicted band size: 39kDa

Observed band size: 39kDa

For Research Use Only