

SYPL1 Rabbit mAb (AR1914)

Key Features

Host Species:	Rabbit
Reactivity:	Human, Mouse, Rat
Applications:	WB, IHC, FC
Isotype:	IgG, Kappa
MW:	29kDa (Calculated) 29kDa (Observed)

Recommended Dilution Ratios

IHC:	1:200-1000
WB:	1:1000-5000
FC:	1:100-500

Storage

-15°C to -25°C/1 year (Do not lower than -25°C)

Basic Information

Clonality	Monoclonal
-----------	------------

Immunogen Information

Specificity	Endogenous
-------------	------------

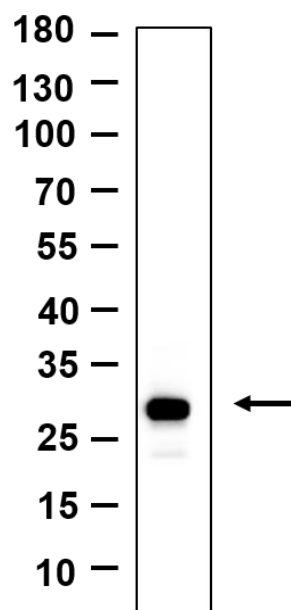
Target Information

Gene name	SYPL1, SYPL
Protein Name	Synaptophysin-like protein 1 (Pantophysin)

	Organism	Gene ID	UniProt ID
	Human	6856	Q16563
Cellular Localization	Cytoplasmic vesicle membrane; Multi-pass membrane protein. Melanosome. Note: Cytoplasmic transport vesicles (By similarity). Identified by mass spectrometry in melanosome fractions from stage I to stage IV.		

Validation Data

kDa



Western blot analysis of lysates from A549 cell, primary antibody was diluted at 1:1000, 4 °C overnight. Dylight 800 secondary antibody was diluted at 1:10000, 37°C 1hour.

For Research Use Only