

SLC25A26 Rabbit mAb (AR1913)

Key Features

Host Species:	Rabbit
Reactivity:	Human, Mouse, Rat
Applications:	WB
Isotype:	IgG, Kappa
MW:	29kDa (Calculated) 29kDa (Observed)

Recommended Dilution Ratios

WB:	1:1000-5000
-----	-------------

Storage

-15°C to -25°C/1 year (Do not lower than -25°C)

Basic Information

Clonality	Monoclonal
-----------	------------

Immunogen Information

Specificity	Endogenous
-------------	------------

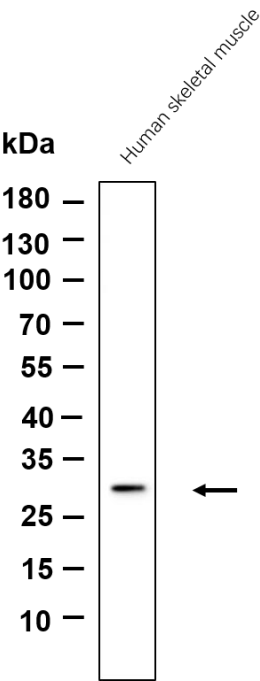
Target Information

Gene name	SLC25A26, SAMC
Protein Name	Mitochondrial S-adenosylmethionine carrier protein (SAM carrier) (Solute carrier family 25 member 26)

Organism	Gene ID	UniProt ID
Human	115286	Q70HW3
Mouse	57279	Q9Z2Z6

Cellular Localization	Mitochondrion inner membrane; Multi-pass membrane protein.
Tissue specificity	Widely expressed. Highly expressed in testis, with moderate expression in brain, heart, kidney, lung, skeletal muscle, pancreas, small intestine and liver, and low expression in spleen.

Validation Data



Western blot analysis of lysates from Human skeletal muscle cell, primary antibody was diluted at 1:1000, 4°C overnight. Dylight 800 secondary antibody was diluted at 1:10000, 37°C 1hour.

For Research Use Only