

CTRP2 Rabbit mAb (AR1911)

Key Features

Host Species:	Rabbit
Reactivity:	Human, Mouse, Rat
Applications:	WB
Isotype:	IgG, Kappa
MW:	30kDa (Calculated) 30kDa (Observed)

Recommended Dilution Ratios

WB:	1:1000-5000
-----	-------------

Storage

-15°C to -25°C/1 year (Do not lower than -25°C)

Basic Information

Clonality	Monoclonal
-----------	------------

Immunogen Information

Specificity	Endogenous
-------------	------------

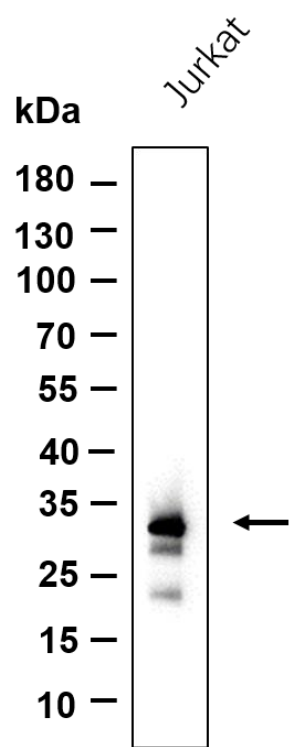
Target Information

Gene name	C1QTNF2, CTRP2, UNQ6349/PRO21054
Protein Name	Complement C1q tumor necrosis factor-related protein 2

Organism	Gene ID	UniProt ID
Human	114898	Q9BXJ5
Mouse	69183	Q9D8U4

Cellular Localization	Secreted.
Tissue specificity	Expressed in adipose tissue.

Validation Data



Western blot analysis of lysates from Jurkat cell, primary antibody was diluted at 1:1000, 4 °C overnight. Dylight 800 secondary antibody was diluted at 1:10000, 37°C 1hour.

For Research Use Only