

β III Tubulin Rabbit mAb (AR1833)

Key Features

Host Species:	Rabbit
Reactivity:	Human,Mouse,Rat
Applications:	WB,IHC,IF,IP,ELISA
Isotype:	IgG,Kappa
MW:	50kDa (Calculated) 50kDa (Observed)

Recommended Dilution Ratios

WB:	1:2000-10000
IHC:	1:1000-5000
IF:	1:200-1000
IP:	1:50-200
ELISA:	1:5000-20000

Storage

-15°C to -25°C/1 year (Do not lower than -25°C)

Basic Information

Clonality	Monoclonal
-----------	------------

Immunogen Information

Specificity	Endogenous
-------------	------------

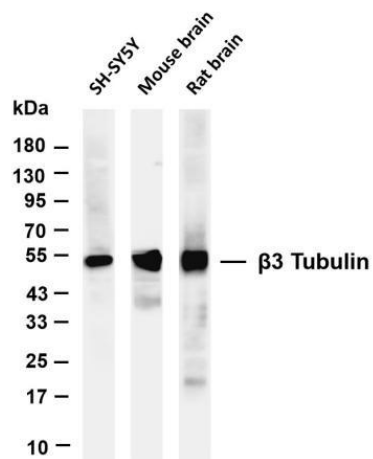
Target Information

Gene name	TUBB3
Protein Name	Tubulin beta-3 chain

Organism	Gene ID	UniProt ID
Human	10381	Q13509
Mouse	22152	Q9ERD7
Rat	246118	Q4QRB4

Cellular Localization	Cytoplasm
Tissue specificity	Expression is primarily restricted to central and peripheral nervous system. Greatly increased expression in most cancerous tissues.

Validation Data



Various whole cell lysates were separated by 4-20% SDS-PAGE, and the membrane was blotted with anti- $\beta 3$ Tubulin antibody. The HRP-conjugated Goat anti-Rabbit IgG(H + L) antibody was used to detect the antibody.

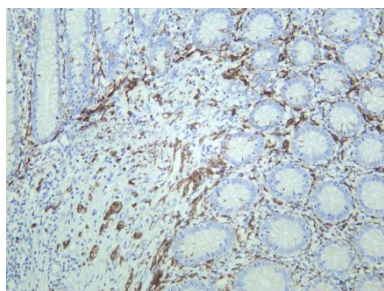
Lane 1: SH-SY5Y

Lane 2: Mouse brain

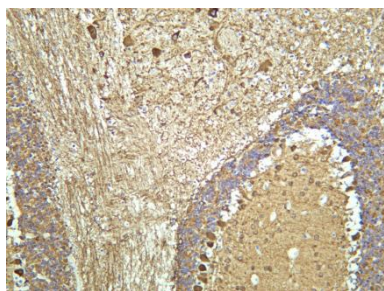
Lane 3: Rat brain

Predicted band size: 50kDa

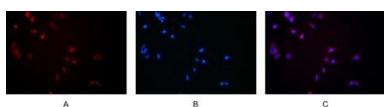
Observed band size: 50kDa



Human appendix was stained with anti- $\beta 3$ Tubulin rabbit antibody.



Mouse brain was stained with anti- $\beta 3$ Tubulin rabbit antibody.



Immunofluorescence analysis of HEK293.

Picture A: $\beta 3$ Tubulin antibody (red).

Picture B: DAPI (blue).

Picture C: Merge of A+B

For Research Use Only