

Insulin Receptor β Rabbit mAb (AR1831)

Key Features

Host Species:	Rabbit
Reactivity:	Human, Mouse, Rat
Applications:	WB, IHC, IF, IP, ELISA
Isotype:	IgG, Kappa
MW:	156kDa (Calculated) 95kDa (Observed)

Recommended Dilution Ratios

WB:	1:2000-10000
IHC:	1:200-1000
IF:	1:200-1000
IP:	1:50-200
ELISA:	1:5000-20000

Storage

-15°C to -25°C/1 year (Do not lower than -25°C)

Basic Information

Clonality	Monoclonal
-----------	------------

Immunogen Information

Specificity	The antibody detects endogenous YAP(Phospho AE13) protein
-------------	---

Target Information

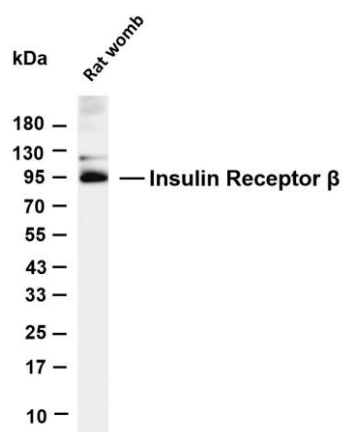
Gene name	INSR
Protein Name	Insulin Receptor β

	Organism	Gene ID	UniProt ID
	Human	3643	P06213
	Mouse	16337	P15208
	Rat		P15127
Cellular Localization	Membrane		

Tissue specificity

Isoform Long and isoform Short are predominantly expressed in tissue targets of insulin metabolic effects: liver, adipose tissue and skeletal muscle but are also expressed in the peripheral nerve, kidney, pulmonary alveoli, pancreatic acini, placenta vascular endothelium, fibroblasts, monocytes, granulocytes, erythrocytes and skin. Isoform Short is preferentially expressed in fetal cells such as fetal fibroblasts, muscle, liver and kidney. Found as a hybrid receptor with IGF1R in muscle, heart, kidney, adipose tissue, skeletal muscle, hepatoma, fibroblasts, spleen and placenta (at protein level). Overexpressed in several tumors, including breast, colon, lung, ovary, and thyroid carcinomas.

Validation Data

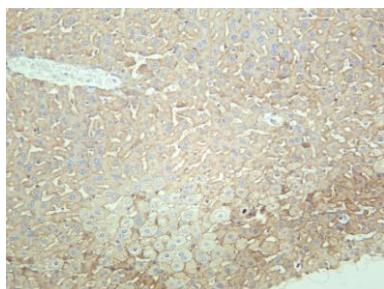


Various whole cell lysates were separated by 4-20% SDS-PAGE, and the membrane was blotted with anti-Insulin Receptor β antibody. The HRP conjugated Goat anti-Rabbit IgG(H + L) antibody was used to detect the antibody.

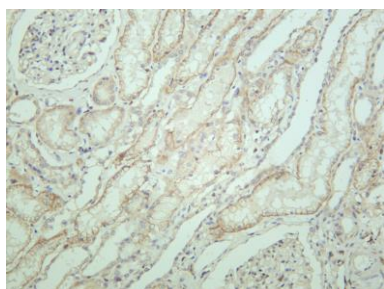
Lane 1: Rat womb

Predicted band size: 156kDa

Observed band size: 95kDa



Mouse liver was stained with anti-Insulin Receptor β rabbit antibody.



Human kidney was stained with anti-Insulin Receptor β rabbit antibody.