

γ Tubulin Rabbit mAb (AR1823)

Key Features

Host Species:	Rabbit
Reactivity:	Human,Mouse,Rat
Applications:	WB,IF,IP,ELISA
Isotype:	IgG,Kappa
MW:	51kDa (Calculated) 51kDa (Observed)

Recommended Dilution Ratios

WB:	1:2000-10000
IF:	1:200-1000
IP:	1:50-200
ELISA:	1:5000-20000

Storage

-15°C to -25°C/1 year (Do not lower than -25°C)

Basic Information

Clonality	Monoclonal
-----------	------------

Immunogen Information

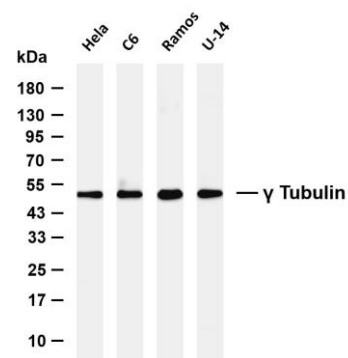
Specificity	Endogenous
-------------	------------

Target Information

Gene name	TUBG1
Protein Name	TUBG1

	Organism	Gene ID	UniProt ID
	Human	7283	P23258
	Mouse		P83887
	Rat		P83888
Cellular Localization	Cytoplasm, cytoskeleton, microtubule organizing center, centrosome. Cytoplasm, cytoskeleton, spindle. Localizes to mitotic spindle microtubules.		
Tissue specificity	Mammary cancer, Skin		

Validation Data



Various whole cell lysates were separated by 4-20% SDS-PAGE, and the membrane was blotted with anti- γ Tubulin antibody. The HRP conjugated Goat anti-Rabbit IgG (H + L) antibody was used to detect the antibody.

Lane 1: HeLa

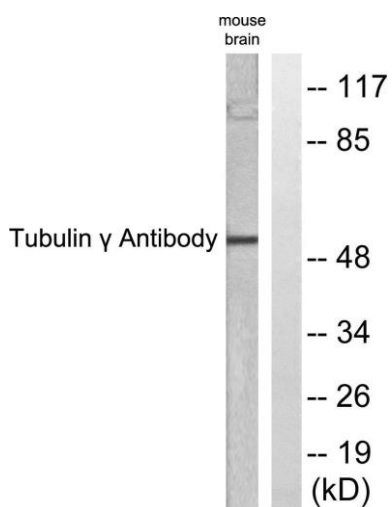
Lane 2: C6

Lane 3: Ramos

Lane 4: U-14

Predicted band size: 51kDa

Observed band size: 51kDa



Western blot analysis of lysates from mouse brain, using Tubulin gamma Antibody. The lane on the right is blocked with the synthesized peptide.

For Research Use Only