

RGS6 Rabbit mAb (AR1808)

Key Features

Host Species:	Rabbit
Reactivity:	Human,Mouse,Rat
Applications:	WB
Isotype:	IgG,Kappa
MW:	54kDa (Calculated) 54kDa (Observed)

Recommended Dilution Ratios

WB:	1:1000-5000
-----	-------------

Storage

-15°C to -25°C/1 year (Do not lower than -25°C)

Basic Information

Clonality	Monoclonal
-----------	------------

Immunogen Information

Specificity	Endogenous
-------------	------------

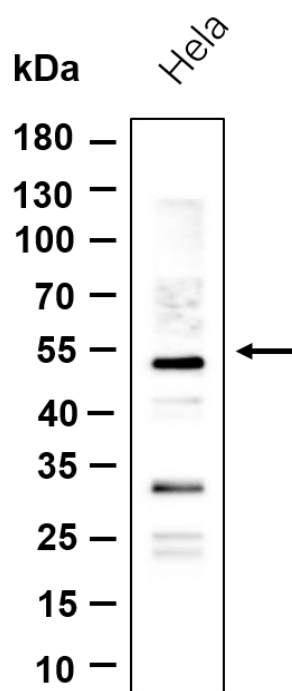
Target Information

Gene name	RGS6
Protein Name	Regulator of G-protein signaling 6 (RGS6) (S914)

Organism	Gene ID	UniProt ID
Human	9628	P49758
Mouse	50779	Q9Z2H2
Rat	54295	P49801

Cellular Localization	Cytoplasm. Cytoplasm, cytosol. Membrane; Peripheral membrane protein. Nucleus. Cell membrane. Note:Interaction with GNB5 mediates translocation to the nucleus.
-----------------------	---

Validation Data



Western blot analysis of lysates from HeLa cell, primary antibody was diluted at 1:1000, 4 °C overnight. Dylight 800 secondary antibody was diluted at 1:10000, 37°C 1 hour.

For Research Use Only