

## BSND Rabbit mAb (AR1806)

### Key Features

Host Species:	Rabbit
Reactivity:	Human,Mouse,Rat
Applications:	WB,IHC
Isotype:	IgG,Kappa
MW:	35kDa (Calculated) 35kDa (Observed)

### Recommended Dilution Ratios

IHC:	1:200-1000
WB:	1:1000-5000

### Storage

-15°C to -25°C/1 year (Do not lower than -25°C)

### Basic Information

Clonality	Monoclonal
-----------	------------

### Immunogen Information

Specificity	Endogenous
-------------	------------

### Target Information

Gene name	BSND, BART
Protein Name	Barttin

Organism	Gene ID	UniProt ID
Human	7809	Q8WZ55
Mouse	140475	Q8VIM4
Rat	192675	Q8R2H3

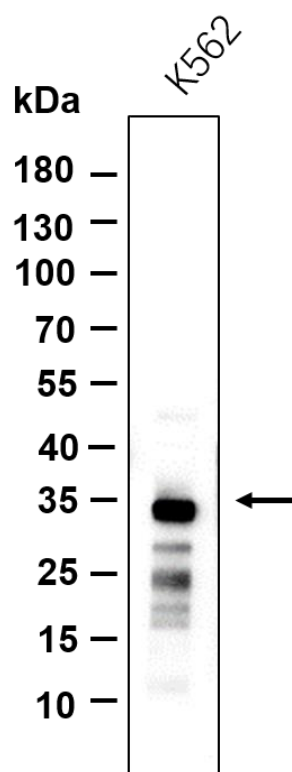
### Cellular Localization

Basolateral cell membrane; Multi-pass membrane protein. Note:Mostly sorted at the basolateral membrane. A significant amount also observed intracellularly. Staining in membranes of the renal tubule and of potassium-secreting epithelia of the inner ear is basolateral (By similarity).

### Tissue specificity

Expressed primarily in kidney. Expressed in specific nephron segments and in the stria vascularis of the inner ear.

## Validation Data



Western blot analysis of lysates from K562 cell, primary antibody was diluted at 1:1000, 4°C overnight. Dylight 800 secondary antibody was diluted at 1:10000, 37°C 1hour.

For Research Use Only