

## Sortilin Rabbit mAb (AR1772)

### Key Features

Host Species:	Rabbit
Reactivity:	Human,Mouse,Rat
Applications:	WB,IHC,IF,ELISA
Isotype:	IgG,Kappa
MW:	92kDa (Calculated) 100kDa (Observed)

### Recommended Dilution Ratios

IHC:	1:500-2000
WB:	1:2000-10000
IF:	1:200-1000
ELISA:	1:5000-20000

### Storage

-15°C to -25°C/1 year (Do not lower than -25°C)

### Basic Information

Clonality	Monoclonal
-----------	------------

### Immunogen Information

Specificity	Endogenous
-------------	------------

### Target Information

Gene name	SORT1
Protein Name	Sortilin (100 kDa NT receptor) (Glycoprotein 95) (Gp95) (Neurotensin receptor 3) (NT3) (NTR3)

Organism	Gene ID	UniProt ID
Human	6272	Q99523
Mouse		Q6PHU5
Rat		O54861

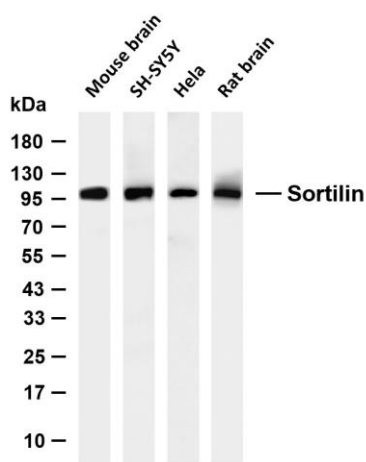
Cellular Localization	Golgi apparatus, Golgi stack membrane; Single-pass type I membrane protein. Endosome membrane; Single-pass type I membrane protein. Endoplasmic reticulum membrane; Single-pass type I membrane protein. Nucleus membrane; Single-pass
-----------------------	--

type I membrane protein. Cell membrane; Single-pass type I membrane protein; Extracellular side. Lysosome membrane; Single-pass type I membrane protein. Localized to membranes of the endoplasmic reticulum, endosomes, Golgi stack, lysosomes and nucleus. A small fraction of the protein is also localized to the plasma membrane. May also be found in SLC2A4/GLUT4 storage vesicles (GSVs) in adipocytes. Localization to the plasma membrane in adipocytes may be enhanced by insulin.

Expressed in brain and prostate (at protein level). Expressed at high levels in brain, spinal cord, heart, skeletal muscle, thyroid, placenta and testis. Expressed at lower levels in lymphoid organs, kidney, colon and liver.

## Tissue specificity

## Validation Data



Various whole cell lysates were separated by 4-20% SDS-PAGE, and the membrane was blotted with anti-Sortilin antibody. The HRP-conjugated Goat anti-Rabbit IgG (H + L) antibody was used to detect the antibody.

Lane 1: Mouse brain

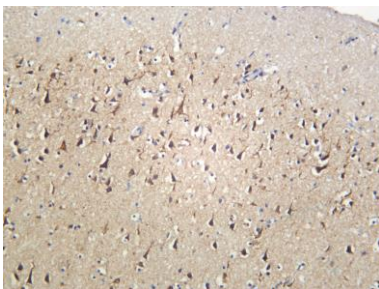
Lane 2: SH-SY5Y

Lane 3: Hela

Lane 4: Rat brain

Predicted band size: 92kDa

Observed band size: 100kDa



Human brain was stained with anti-Sortilin Rabbit antibody

For Research Use Only