

CCRL2 Rabbit pAb (AR20075)

Key Features

Host Species:	Rabbit
Reactivity:	Human, Mouse
Applications:	WB, IF, ELISA
Isotype:	IgG
MW:	40kD (Observed)

Recommended Dilution Ratios

WB:	1:500-2000
IF:	1:200-1:1000
ELISA:	1:20000

Not yet tested in other applications

Storage

-15°C to -25°C/1 year (Do not lower than -25°C)

Basic Information

Clonality	Polyclonal
-----------	------------

Immunogen Information

Specificity	CCRL2 Polyclonal Antibody detects endogenous levels of CCRL2 protein
-------------	--

Target Information

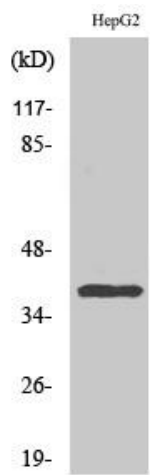
Gene name	CCRL2
Protein Name	C-C chemokine receptor-like 2

Organism	Gene ID	UniProt ID
Human	9034	O00421
Mouse		O35457

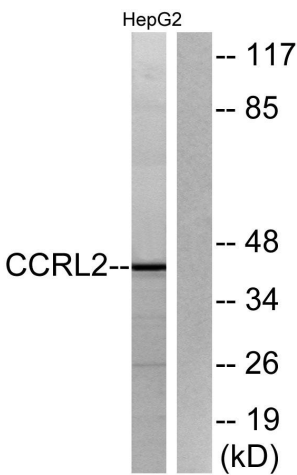
Cellular Localization	Cell membrane ; Multi-pass membrane protein . Expressed abundantly in immunal tissues such as spleen, fetal liver, lymph node and bone marrow. Strong expression also in lung and heart. Expressed in almost all hematopoietic cells including monocytes, macrophages, PMNs, T-cells (both CD4+ and CD8+), monocyte derived iDCs, NK cells, and CD34+
Tissue specificity	

progenitor cells. B-cells expressed isoform 1 but not isoform 2. Up-regulated on synovial neutrophils of rheumatoid arthritis patients

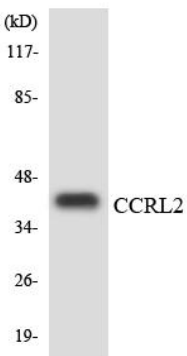
Validation Data



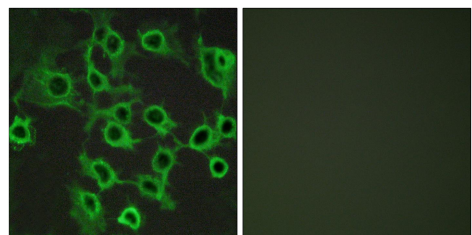
Western Blot analysis of various cells using CCRL2 Polyclonal Antibody



Western blot analysis of lysates from HepG2 cells, using CCRL2 Antibody. The lane on the right is blocked with the synthesized peptide.



Western blot analysis of the lysates from 293 cells using CCRL2 antibody.



Immunofluorescence analysis of COS7 cells, using CCRL2 Antibody. The picture on the right is blocked with the synthesized peptide.