

OPA1 Rabbit mAb (AR1728)

Key Features

Host Species:	Rabbit
Reactivity:	Human,Mouse,Rat
Applications:	WB,IHC,IF,ELISA
Isotype:	IgG,Kappa
MW:	111kDa (Calculated) 85kDa (Observed)

Recommended Dilution Ratios

IHC:	1:1000-4000
WB:	1:10000-50000
IF:	1:200-1000
ELISA:	1:5000-20000

Storage

-15°C to -25°C/1 year (Do not lower than -25°C)

Basic Information

Clonality	Monoclonal
-----------	------------

Immunogen Information

Specificity	Endogenous
-------------	------------

Target Information

Gene name	OPA1 KIAA0567
Protein Name	Dynamin-like 120 kDa protein, mitochondrial (Optic atrophy protein 1)

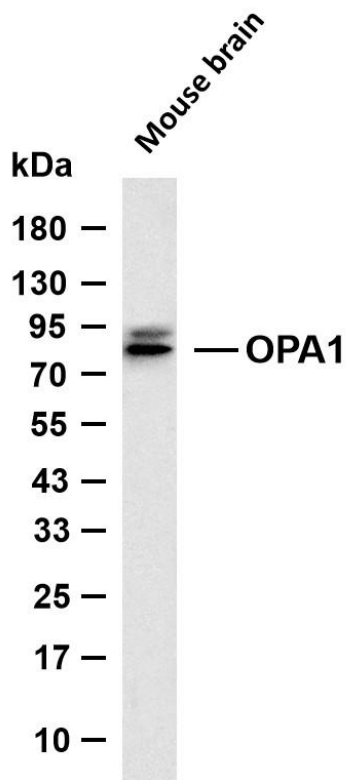
Organism	Gene ID	UniProt ID
Human	4976	O60313
Mouse		P58281
Rat		Q2TA68

Cellular Localization	Mitochondrion inner membrane; Single-pass membrane protein. Mitochondrion intermembrane space. Mitochondrion membrane. Detected at contact sites between endoplasmic reticulum and mitochondrion membranes.
-----------------------	---

Tissue specificity

Highly expressed in retina. Also expressed in brain, testis, heart and skeletal muscle. Isoform 1 expressed in retina, skeletal muscle, heart, lung, ovary, colon, thyroid gland, leukocytes and fetal brain. Isoform 2 expressed in colon, liver, kidney, thyroid gland and leukocytes. Low levels of all isoforms expressed in a variety of tissues.

Validation Data

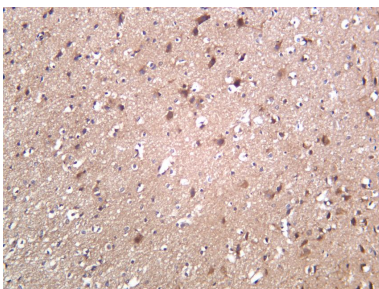


Various whole cell lysates were separated by 4-20% SDS-PAGE, and the membrane was blotted with anti-OPA1 antibody. The HRP conjugated Goat anti-Rabbit IgG (H + L) antibody was used to detect the antibody.

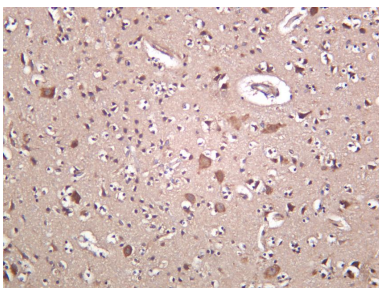
Lane 1: Mouse brain

Predicted band size: 111kDa

Observed band size: 85kDa



Human brain was stained with anti-OPA1 Rabbit antibody.



Rat brain was stained with anti-OPA1 Rabbit antibody.

