

Fyn Rabbit mAb (AR1762)

Key Features

Host Species:	Rabbit
Reactivity:	Human,Mouse,Rat
Applications:	WB,IF,ELISA
Isotype:	IgG,Kappa
MW:	61kDa (Calculated) 61kDa (Observed)

Recommended Dilution Ratios

WB:	1:2000-10000
IF:	1:200-1000
ELISA:	1:5000-20000

Storage

-15°C to -25°C/1 year (Do not lower than -25°C)

Basic Information

Clonality	Monoclonal
-----------	------------

Immunogen Information

Specificity	Endogenous
-------------	------------

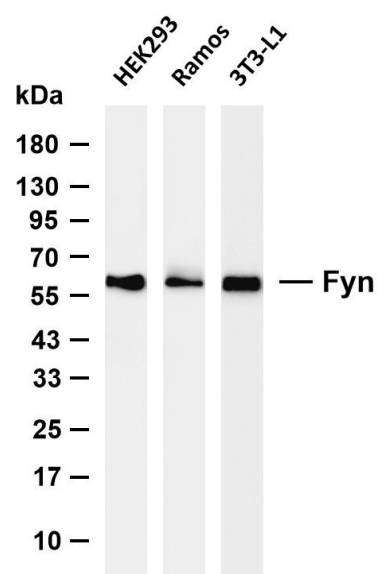
Target Information

Gene name	FYN
Protein Name	Tyrosine-protein kinase Fyn

Organism	Gene ID	UniProt ID
Human	2534	P06241
Mouse	14360	P39688
Rat	25150	Q62844

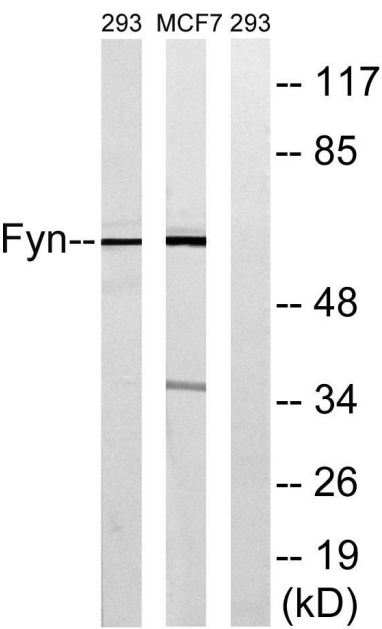
Cellular Localization	Cytoplasm. Nucleus. Cell membrane. Present and active in lipid rafts. Palmitoylation is crucial for proper trafficking.
Tissue specificity	Isoform 1 is highly expressed in the brain. Isoform 2 is expressed in cells of hemopoietic lineages, especially T-lymphocytes.

Validation Data



Various whole cell lysates were separated by 4-20% SDS-PAGE, and the membrane was blotted with anti-Fyn antibody. The HRP-conjugated Goat anti-Rabbit IgG (H + L) antibody was used to detect the antibody.

Lane 1: HEK293
Lane 2: Ramos
Lane 3: 3T3-L1
Predicted band size: 61kDa
Observed band size: 61kDa



Western blot analysis of lysates from MCF-7 and 293 cells, using Fyn Antibody. The lane on the right is blocked with the synthesized peptide.

For Research Use Only