

Cytokeratin 10 Rabbit mAb (AR1756)

Key Features

Host Species:	Rabbit
Reactivity:	Human,Mouse,Rat
Applications:	WB,IHC,IF,ELISA
Isotype:	IgG,Kappa
MW:	59kDa (Calculated) 59kDa (Observed)

Recommended Dilution Ratios

IHC:	1:200-1000
WB:	1:2000-10000
IF:	1:200-1000
ELISA:	1:5000-20000

Storage

-15°C to -25°C/1 year (Do not lower than -25°C)

Basic Information

Clonality	Monoclonal
-----------	------------

Immunogen Information

Specificity	Endogenous
-------------	------------

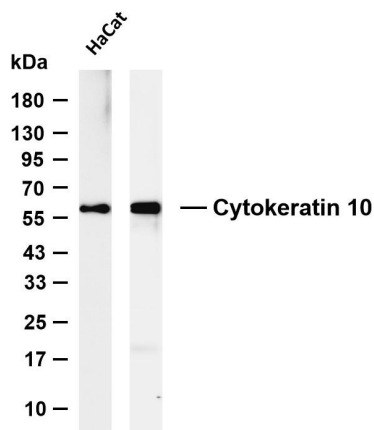
Target Information

Gene name	KRT10
Protein Name	Keratin type I cytoskeletal 10

Organism	Gene ID	UniProt ID
Human	3858	P13645
Mouse	16661	P02535
Rat	450225	Q6IFW6

Cellular Localization	Secreted, extracellular space. Cell surface. Localized on the surface of desquamated nasal epithelial cells (PubMed:12427098). Localized on the surface of lung cell lines (PubMed:19627498).
Tissue specificity	Seen in all suprabasal cell layers including stratum corneum. Expressed on the surface of lung cell lines (PubMed:19627498).

Validation Data



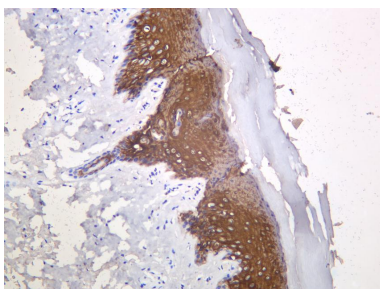
Various whole cell lysates were separated by 4-20% SDS-PAGE, and the membrane was blotted with anti-Cytokeratin 10 antibody. The HRP-conjugated Goat anti-Rabbit IgG (H + L) antibody was used to detect the antibody.

Lane 1: HaCat

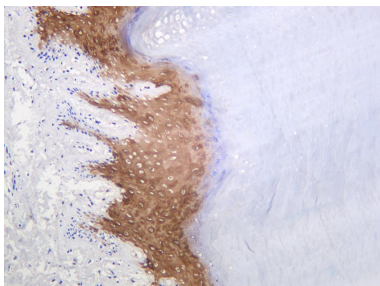
Lane 2: Mouse skin

Predicted band size: 59kDa

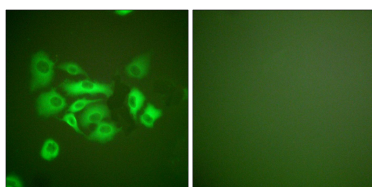
Observed band size: 59kDa



Rat skin was stained with anti-Cytokeratin 10 Rabbit antibody.



Human skin was stained with anti-Cytokeratin 10 Rabbit antibody.



Immunofluorescence analysis of A549 cells, using Keratin 10 Antibody. The picture on the right is blocked with the synthesized peptide.

For Research Use Only