

Galectin-3 Rabbit mAb (AR1745)

Key Features

Host Species:	Rabbit
Reactivity:	Human, Mouse, Rat
Applications:	WB, IHC, IF, ELISA
Isotype:	IgG, Kappa
MW:	26kDa (Calculated) 28kDa (Observed)

Recommended Dilution Ratios

IHC:	1:2000-6000
WB:	1:2000-10000
IF:	1:200-1000
ELISA:	1:5000-20000

Storage

-15°C to -25°C/1 year (Do not lower than -25°C)

Basic Information

Clonality	Monoclonal
-----------	------------

Immunogen Information

Specificity	Endogenous
-------------	------------

Target Information

Gene name	LGALS3
Protein Name	Galectin-3

Organism	Gene ID	UniProt ID
Human	3958	P17931
Mouse		P16110
Rat	83781	P08699

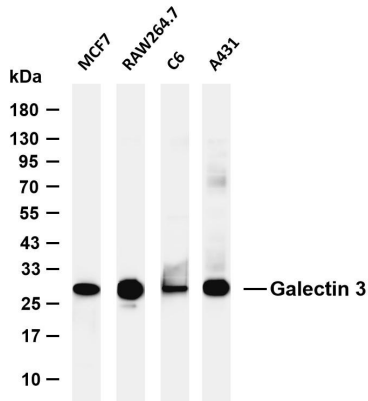
Cellular Localization	Cytoplasm. Nucleus. Secreted. Secreted by a non-classical secretory pathway and associates with the cell surface. Can be secreted; the secretion is dependent on protein unfolding and facilitated by the cargo receptor TMED10; it results in protein translocation from the cytoplasm into the ERGIC (endoplasmic
-----------------------	---

reticulum-Golgi intermediate compartment) followed by vesicle entry and secretion (PubMed:32272059).

A major expression is found in the colonic epithelium. It is also abundant in the activated macrophages. Expressed in fetal membranes.

Tissue specificity

Validation Data



Various whole cell lysates were separated by 4-20% SDS-PAGE, and the membrane was blotted with anti-Galectin 3 antibody. The HRP conjugated Goat anti-Rabbit IgG (H + L) antibody was used to detect the antibody.

Lane 1: MCF7

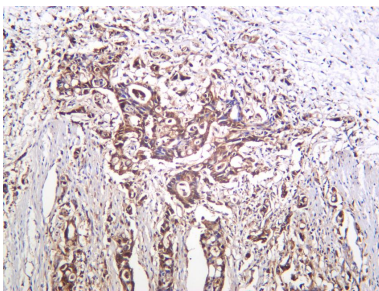
Lane 2: RAW264.7

Lane 3: C6

Lane 4: A431

Predicted band size: 26kDa

Observed band size: 28kDa



Human colon carcinoma was stained with anti-Galectin 3 Rabbit antibody.

For Research Use Only