

## ILK Rabbit mAb (AR1735)

### Key Features

Host Species:	Rabbit
Reactivity:	Human, Mouse, Rat
Applications:	WB, IHC, IF, IP, ELISA
Isotype:	IgG, Kappa
MW:	51kDa (Calculated) 51kDa (Observed)

### Recommended Dilution Ratios

IHC:	1:500-2000
WB:	1:2000-10000
IF:	1:200-1000
ELISA:	1:5000-20000
IP:	1:50-200

### Storage

-15°C to -25°C/1 year (Do not lower than -25°C)

### Basic Information

Clonality	Monoclonal
-----------	------------

### Immunogen Information

Specificity	Endogenous
-------------	------------

### Target Information

Gene name	ILK ILK1 ILK2
Protein Name	Integrin-linked protein kinase

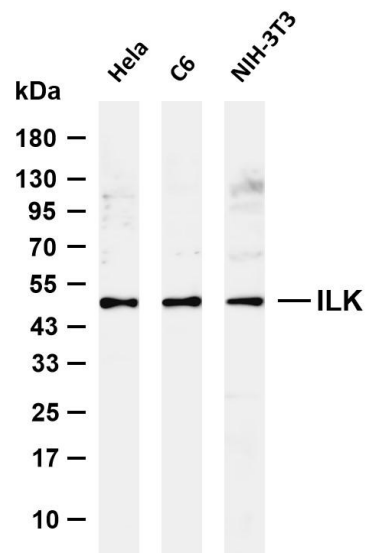
Organism	Gene ID	UniProt ID
Human	3611	Q13418
Mouse	16202	O55222
Rat	170922	Q99J82

Cellular Localization	Cell junction, focal adhesion. Cell membrane; Peripheral membrane protein; Cytoplasmic side. Cell projection, lamellipodium. Cytoplasm, myofibril, sarcomere.
-----------------------	---

Tissue specificity

Highly expressed in heart followed by skeletal muscle, pancreas and kidney. Weakly expressed in placenta, lung and liver.

Validation Data



Various whole cell lysates were separated by 4-20% SDS-PAGE, and the membrane was blotted with anti-ILK antibody. The HRP conjugated Goat anti-Rabbit IgG (H + L) antibody was used to detect the antibody.

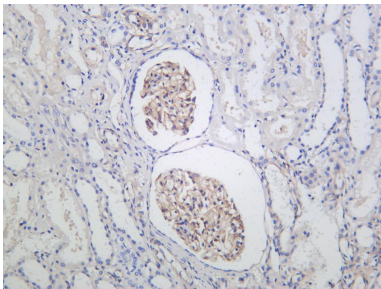
Lane 1: HeLa

Lane 2: C6

Lane 3: NIH-3T3

Predicted band size: 51kDa

Observed band size: 51kDa



Human kidney was stained with anti-ILK Rabbit antibody.

For Research Use Only