

## BIRC2 Rabbit mAb (AR1734)

### Key Features

Host Species:	Rabbit
Reactivity:	Human
Applications:	WB,IHC,IF,ELISA
Isotype:	IgG,Kappa
MW:	70kDa (Calculated) 70kDa (Observed)

### Recommended Dilution Ratios

IHC:	1:200-1000
WB:	1:2000-10000
IF:	1:200-1000
ELISA:	1:5000-20000

### Storage

-15°C to -25°C/1 year (Do not lower than -25°C)

### Basic Information

Clonality	Monoclonal
-----------	------------

### Immunogen Information

Specificity	Endogenous
-------------	------------

### Target Information

Gene name	BIRC2 API1 IAP2 MIHB RNF48
Protein Name	Baculoviral IAP repeat-containing protein 2 (C-IAP1) (IAP homolog B) (Inhibitor of apoptosis protein 2) (IAP-2) (hIAP-2) (hIAP2) (RING finger protein 48) (TNFR2-TRAF-signaling complex protein 2)

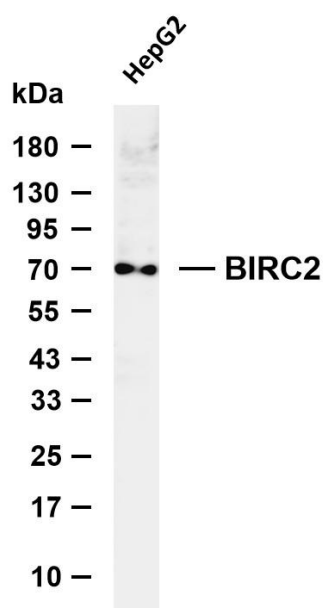
Organism	Gene ID	UniProt ID
Human	329	Q13490
Mouse		Q62210

Cellular Localization	Cytoplasm. Nucleus. Agents that induce either the extrinsic or intrinsic apoptotic pathways promote its redistribution from the nuclear compartment to the cytoplasmic compartment. Associated with the midbody in telophase cells, and found diffusely in the nucleus of interphase cells.
-----------------------	---

Tissue specificity

Present in many fetal and adult tissues. Mainly expressed in adult skeletal muscle, thymus, testis, ovary, and pancreas, low or absent in brain and peripheral blood leukocytes.

## Validation Data

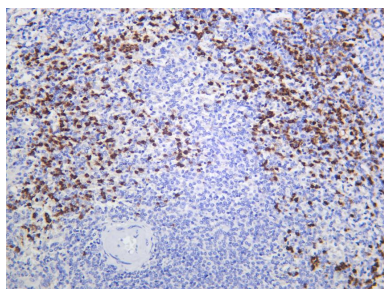


Various whole cell lysates were separated by 4-20% SDS-PAGE, and the membrane was blotted with anti-BIRC2 antibody. The HRP conjugated Goat anti-Rabbit IgG (H + L) antibody was used to detect the antibody.

Lane 1: HepG2

Predicted band size: 70kDa

Observed band size: 70kDa



Human spleen was stained with anti-BIRC2 Rabbit antibody.

For Research Use Only