

## BNI3L Rabbit mAb (AR1733)

### Key Features

Host Species:	Rabbit
Reactivity:	Human,Mouse,Rat
Applications:	WB,IHC,IF,ELISA
Isotype:	IgG,Kappa
MW:	24kDa (Calculated) 38kDa (Observed)

### Recommended Dilution Ratios

IHC:	1:200-1000
WB:	1:500-2000
IF:	1:200-1000
ELISA:	1:5000-20000

### Storage

-15°C to -25°C/1 year (Do not lower than -25°C)

### Basic Information

Clonality	Monoclonal
-----------	------------

### Immunogen Information

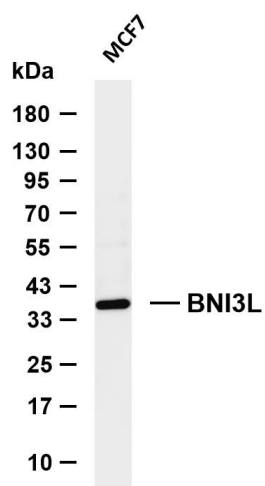
Specificity	Endogenous
-------------	------------

### Target Information

Gene name	BNIP3L BNIP3A BNIP3H NIX
Protein Name	BCL2/adenovirus E1B 19 kDa protein-interacting protein 3-like (Adenovirus E1B19K-binding protein B5) (BCL2/adenovirus E1B 19 kDa protein-interacting protein 3A) (NIP3-like protein X) (NIP3L)

	Organism	Gene ID	UniProt ID
	Human	665	O60238
	Mouse		Q9Z2F7
Cellular Localization	Nucleus envelope. Endoplasmic reticulum. Mitochondrion outer membrane. Membrane; Single-pass membrane protein. Colocalizes with SPATA18 at the mitochondrion outer membrane.		
Tissue specificity	Bone marrow, Brain, Cervix, Epithelium, Fetal liver, Hair follicle dermal papilla.		

## Validation Data



Various whole cell lysates were separated by 4-20% SDS-PAGE, and the membrane was blotted with anti-BNI3L antibody. The HRP conjugated Goat anti-Rabbit IgG (H + L) antibody was used to detect the antibody.

Lane 1: MCF7

Predicted band size: 24kDa

Observed band size: 38kDa

For Research Use Only