

## ARID1A Rabbit mAb (AR1732)

### Key Features

Host Species:	Rabbit
Reactivity:	Human,Mouse,Rat
Applications:	WB,IHC,IF,ELISA
Isotype:	IgG,Kappa
MW:	242kDa (Calculated) 270kDa (Observed)

### Recommended Dilution Ratios

IHC:	1:200-1000
WB:	1:2000-10000
IF:	1:200-1000
ELISA:	1:5000-20000

### Storage

-15°C to -25°C/1 year (Do not lower than -25°C)

### Basic Information

Clonality	Monoclonal
-----------	------------

### Immunogen Information

Specificity	Endogenous
-------------	------------

### Target Information

Gene name	ARID1A BAF250 BAF250A C1orf4 OSA1 SMARCF1 AT-rich interactive domain-containing protein 1A (ARID domain-containing protein 1A) (B120) (BRG1-associated factor 250) (BAF250) (BRG1-associated factor 250a) (BAF250A) (Osa homolog 1) (hOSA1) (SWI-like protein) (SWI/SNF complex protein p270) (SWI/SNF related, matrix-associated, actin-dependent regulator of chromatin subfamily F member 1) (hELD)
Protein Name	

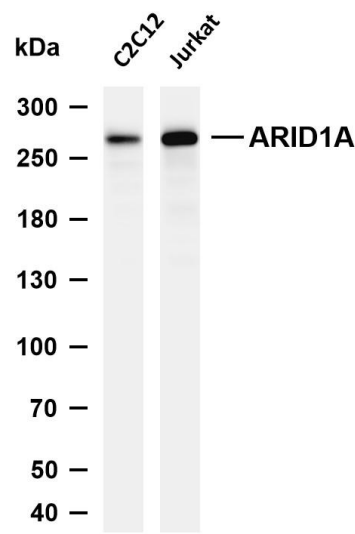
Organism	Gene ID	UniProt ID
Human	8289	O14497
Mouse		A2BH40

Cellular Localization	Nucleus.
-----------------------	----------

Tissue specificity

Highly expressed in spleen, thymus, prostate, testis, ovary, small intestine, colon, and PBL, and at a much lower level in heart, brain, placenta, lung, liver, skeletal muscle, kidney, and pancreas.

Validation Data



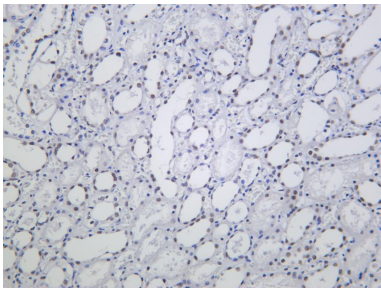
Various whole cell lysates were separated by 4-8% SDS-PAGE, and the membrane was blotted with anti-ARID1A antibody. The HRP conjugated Goat anti-Rabbit IgG (H + L) antibody was used to detect the antibody.

Lane 1: C2C12

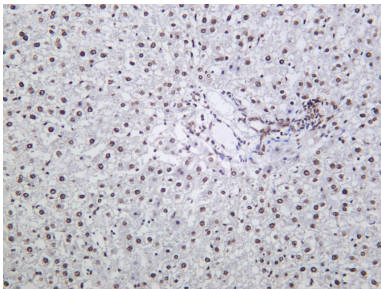
Lane 2: Jurkat

Predicted band size: 242kDa

Observed band size: 270kDa



Human kidney was stained with anti-ARID1A Rabbit antibody.



Rat liver was stained with anti-ARID1A Rabbit antibody.