

# Thioredoxin Rabbit mAb (AR1730)

## Key Features

Host Species:	Rabbit
Reactivity:	Human,Mouse,Rat
Applications:	WB,IHC,IF,ELISA
Isotype:	IgG,Kappa
MW:	12kDa (Calculated) 12kDa (Observed)

## Recommended Dilution Ratios

IHC:	1:500-2000
WB:	1:2000-10000
IF:	1:200-1000
ELISA:	1:5000-20000

## Storage

-15°C to -25°C/1 year (Do not lower than -25°C)

## Basic Information

Clonality	Monoclonal
-----------	------------

## Immunogen Information

Specificity	Endogenous
-------------	------------

## Target Information

Gene name	TXN TRDX TRX TRX1
Protein Name	Thioredoxin

Organism	Gene ID	UniProt ID
Human	7295	P10599
Mouse	22166	P10639

Cellular Localization

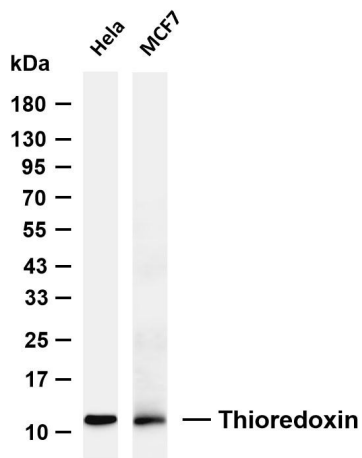
Nucleus. Cytoplasm. Secreted. Translocates from the cytoplasm into the nucleus after phorbol 12-myristate 13-acetate induction (PMA) (PubMed:9108029). Predominantly in the cytoplasm in none irradiated cells (PubMed:11118054). Radiation induces translocation of TRX from the cytoplasm to the nucleus (PubMed:11118054). Secreted by a leaderless secretory pathway

(PubMed:1332947). .

Tissue specificity

Brain, Cajal-Retzius cell, Cerebellum, Cervix, Epithelium, Fetal brain cortex, Hepatocyte

## Validation Data



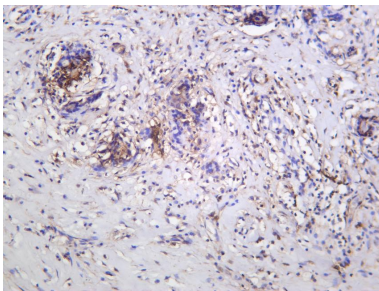
Various whole cell lysates were separated by 4-20% SDS-PAGE, and the membrane was blotted with anti-Thioredoxin antibody. The HRP conjugated Goat anti-Rabbit IgG (H + L) antibody was used to detect the antibody.

Lane 1: HeLa

Lane 2: MCF7

Predicted band size: 12kDa

Observed band size: 12kDa



Thyroid carcinoma was stained with anti-Thioredoxin Rabbit antibody.

For Research Use Only