

Elk-1 Rabbit mAb (AR1727)

Key Features

Host Species:	Rabbit
Reactivity:	Human, Mouse, Rat
Applications:	WB, IHC, IF, IP, ELISA
Isotype:	IgG, Kappa
MW:	45kDa (Calculated) 62kDa (Observed)

Recommended Dilution Ratios

IHC:	1:200-1000
WB:	1:2000-10000
IF:	1:200-1000
ELISA:	1:5000-20000
IP:	1:50-200

Storage

-15°C to -25°C/1 year (Do not lower than -25°C)

Basic Information

Clonality	Monoclonal
-----------	------------

Immunogen Information

Specificity	Endogenous
-------------	------------

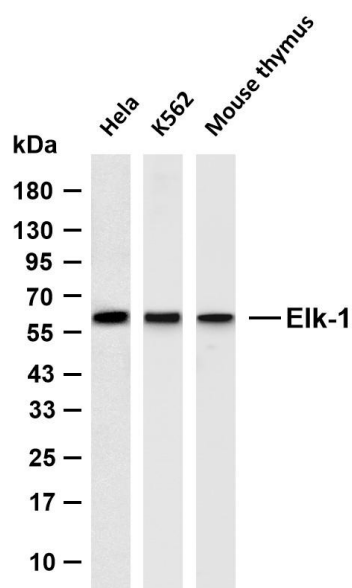
Target Information

Gene name	ELK1
Protein Name	ETS domain-containing protein Elk-1

Organism	Gene ID	UniProt ID
Human	2002	P19419
Mouse	13712	P41969

Cellular Localization	Nucleus.
Tissue specificity	Lung and testis.

Validation Data



Various whole cell lysates were separated by 4-20% SDS-PAGE, and the membrane was blotted with anti-Elk-1 antibody. The HRP conjugated Goat anti-Rabbit IgG (H + L) antibody was used to detect the antibody.

Lane 1: HeLa

Lane 2: K562

Lane 3: Mouse thymus

Predicted band size: 45kDa

Observed band size: 62kDa

For Research Use Only