

## DCLK1 Rabbit mAb (AR1726)

### Key Features

Host Species:	Rabbit
Reactivity:	Human, Mouse, Rat
Applications:	WB, IHC, IF, ELISA
Isotype:	IgG, Kappa
MW:	82kDa (Calculated) 82kDa (Observed)

### Recommended Dilution Ratios

IHC:	1:200-1000
WB:	1:2000-10000
IF:	1:200-1000
ELISA:	1:5000-20000

### Storage

-15°C to -25°C/1 year (Do not lower than -25°C)

### Basic Information

Clonality	Monoclonal
-----------	------------

### Immunogen Information

Specificity	Endogenous
-------------	------------

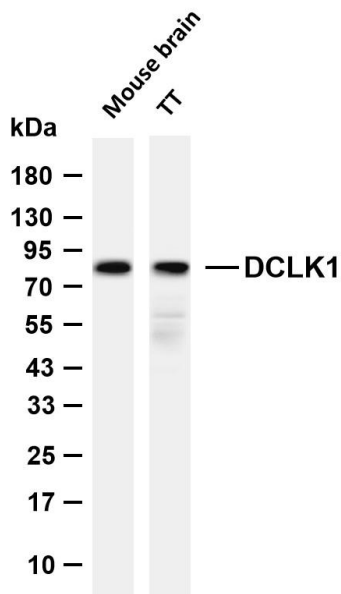
### Target Information

Gene name	DCLK1 DCAMKL1 DCDC3A KIAA0369
Protein Name	DCLK1

	Organism	Gene ID	UniProt ID
	Human	9201	O15075
	Mouse	13175	Q9JLM8
	Rat	83825	O08875
Cellular Localization	intracellular, integral component of plasma membrane, postsynaptic density		
Tissue specificity	In fetal tissues, highly expressed in brain, detectable in lung and liver, but not in kidney. In adult tissues, expressed ubiquitously in the brain, detectable in the heart, liver, spleen, thymus, prostate,		

testis, ovary, small intestine and colon. The type A isoforms seem to be expressed predominantly in fetal brain whereas type B isoforms are expressed abundantly in both fetal and adult brain.

## Validation Data



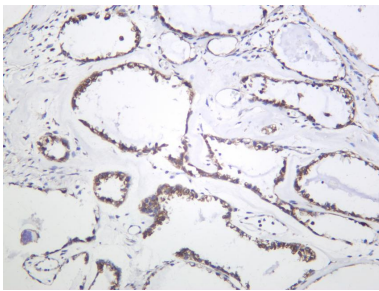
Various whole cell lysates were separated by 4-20% SDS-PAGE, and the membrane was blotted with anti-DCLK1 antibody. The HRP conjugated Goat anti-Rabbit IgG (H + L) antibody was used to detect the antibody.

Lane 1: Mouse brain

Lane 2: TT

Predicted band size: 82kDa

Observed band size: 82kDa



Human ovarian carcinoma was stained with anti-DCLK1 Rabbit antibody

For Research Use Only