

Actinin- α 1 Rabbit mAb (AR1725)

Key Features

Host Species:	Rabbit
Reactivity:	Human, Mouse, Rat
Applications:	WB, IHC, IF, IP, ELISA
Isotype:	IgG, Kappa
MW:	103kDa (Calculated) 103kDa (Observed)

Recommended Dilution Ratios

IHC:	1:200-1000
WB:	1:2000-10000
IF:	1:200-1000
ELISA:	1:5000-20000
IP:	1:50-200

Storage

-15°C to -25°C/1 year (Do not lower than -25°C)

Basic Information

Clonality	Monoclonal
-----------	------------

Immunogen Information

Specificity	Endogenous
-------------	------------

Target Information

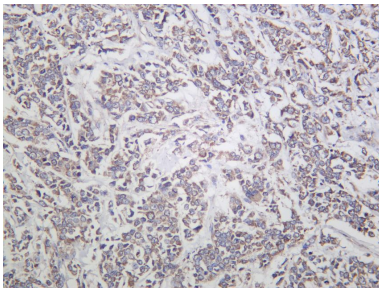
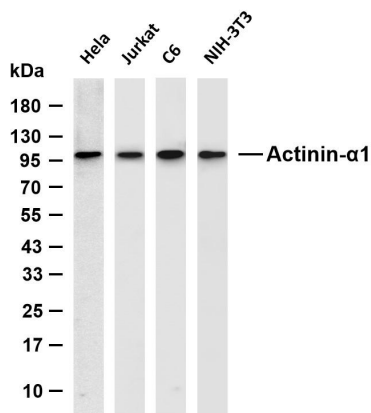
Gene name	ACTN1
Protein Name	Alpha-actinin-1

Organism	Gene ID	UniProt ID
Human	87	P12814
Mouse	109711	Q7TPR4
Rat	81634	Q9Z1P2

Cellular Localization	Cytoplasm, cytoskeleton. Cytoplasm, myofibril, sarcomere, Z line. Cell membrane. Cell junction. Cell projection, ruffle. Colocalizes with MYOZ2 and PPP3CA at the Z-line of heart and skeletal muscle. Colocalizes with PSD in membrane ruffles and central reticular
-----------------------	---

Tissue specificity

Validation Data



structures.

Colon, Epithelium, Hepatocyte, Neuroblastoma, Placenta, Platelet, Skin, Tumor of tongue

Various whole cell lysates were separated by 4-20% SDS-PAGE, and the membrane was blotted with anti-Actinin-α1 antibody. The HRP conjugated Goat anti-Rabbit IgG (H + L) antibody was used to detect the antibody.

Lane 1: HeLa

Lane 2: Jurkat

Lane 3: C6

Lane 4: NIH-3T3

Predicted band size: 103kDa

Observed band size: 103kDa

Human breast was stained with anti-Actinin-α1 Rabbit antibody.

For Research Use Only